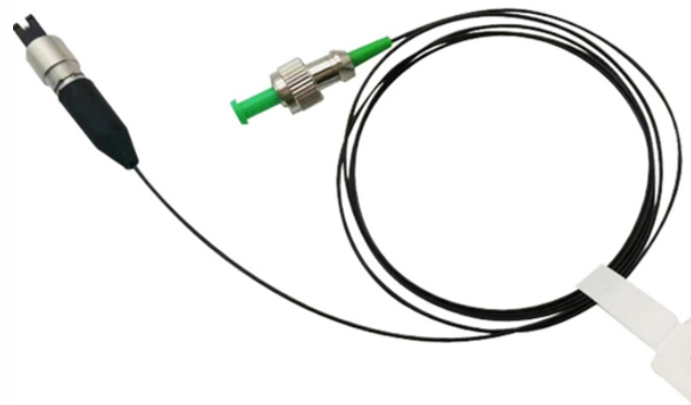


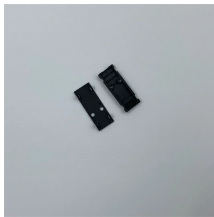
# **Columbia Low Insertion Loss Splitter 2-Core OEM**



## Columbia Low Insertion Loss Splitter 2-Core OEM



Over 500 models in stock! 20W power handling. Mini-Circuits is a global leader in the design and manufacturing of RF, IF, and microwave components from DC to 86GHz.



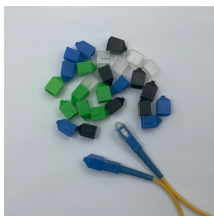
Planar Lightwave Circuit (PLC) splitter provides highly stable splitting performance superbly across temperature and wavelength in low insertion loss, low input polarization sensitivity, excellent ...



This economically priced splitter is designed to help block producers enter the split block business with minimal investment. It's extremely rugged; easy to install, use and maintain; and is compact (just 28" ...



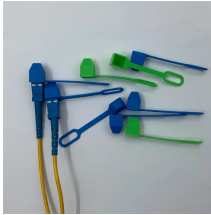
Fusion couplers, made by melting a section of twisted fibers, offer the lowest insertion loss ( $\sim 0.3$  dB) and highest power handling, with a limited wavelength bandwidth of  $\pm 40$  nm and polarization extinction ...



Our SM and double-clad fiber coupler offerings also include a selection of components ideal for OCT applications.



Langzhi China is a professional FTTH equipment manufacturer specializing in GPON/EPON OLT, ONU/ONT, and SFP modules compatible with Huawei & ZTE. Factory-direct pricing, global shipping, ...



Corning's QuickPath™ PLC optical splitters reduce insertion loss and deliver high performance. These devices enable more effective monitoring and management of optical networks. They are available ...



By building these devices directly onto the coupler fibers, OZ Optics saves the customer the added cost and insertion loss of intermediate connectors and adapters, or the time and cost of fusion splicing.



We offer ABS box PLC Splitters with a wide range of styles and sizes to split or combine light with minimal loss. All splitters are manufactured using a very simple process that produces reliable, low ...



It is the loss of signal power resulting from the insertion of a device in a transmission line or optical fiber and is usually expressed in decibels (dB). The loss table below describes how it works with each box ...

## Contact Us

For more information, pricing, or custom energy solutions, please contact us:

Website: <https://www.gdroofing.co.za>

Email: [sales@gdroofing.co.za](mailto:sales@gdroofing.co.za)

Phone: +27 72 418 9365

Address: 22 Electron Avenue, Isando, Johannesburg, 1600, South Africa

This document is for informational purposes only. Specifications subject to change without notice.

