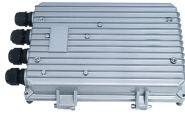


Conceptual diagram of the optical cable sheath



Conceptual diagram of the optical cable sheath



An OFCC cable consists of individual single fiber cables, called optical fiber cable components (OFCCs). OFCCs are a tight-buffered fiber surrounded by aramid yarn and a low-halogen outer jacket.



Optical fibres are stranded helically around the strength member. Function of each strength member is to hold the cable with low strain and to provide mechanical ...



Fiber optic cables play a crucial role in modern communication networks, offering fast and reliable data transmission. They consist of three main components and are available in several structures suited ...



With the help of well labeled diagram, name the components of an optical fibre. Core: It is innermost part of the fibre surrounded by a second layer, called cladding. The refractive index of core is slightly ...



Splice Diagrams or Matrices capture an electric or optical network inside a location - documenting cables, ported equipment, and connections. Splices are fiber-to-fiber, port-to-fiber and port-to-port. ...



Figure 3 is a drawing of the construction of two types of optical fiber, step index and graded index. Step index fiber has a core of ultra-pure glass surrounded by a cladding layer of standard glass with a ...



Vector illustration explaining fiber optic cable components (fiber, tube, strength member, sheath) with a technician. Ideal for telecom education and technology ...



An optical fiber whose core diameter is large compared with the optical wavelength and which, consequently, a large number of light modes are capable of propagation.



Fig. 1 illustrates the fundamental design of a single fiber optic cable. The optical fiber is made up of four parts: the core, cladding, buffer, and jacket. ...



This article examines the key components that make up a fiber optic cable including the core, cladding, coating, strengthening fibers and cable jacket.



This tutorial lesson explains about the structure of fiber optic cable (FOC) and the functions of core, cladding and coating.



For greater environmental protection, fibers are commonly incorporated into cables. Typical cables have a polyethylene sheath that encases the fiber within a strength member such as steel or Kevlar ...

Contact Us

For more information, pricing, or custom energy solutions, please contact us:

Website: <https://www.gdroofing.co.za>

Email: sales@gdroofing.co.za

Phone: +27 72 418 9365

Address: 22 Electron Avenue, Isando, Johannesburg, 1600, South Africa

This document is for informational purposes only. Specifications subject to change without notice.

