

# Conditions for pre-burying optical cables in tunnels



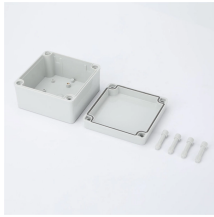
## Overview

Recommended technical requirements are detailed by reference to IEC 60794-3-11 on outdoor optical fibre cables for duct, directly buried, and lashed aerial applications. The methods described are intended for guideline use only, as it is impossible to cover all the various conditions that may arise during an installation. Individual. Recommendation ITU-T L. The following formulas may be used to determine general guidelines for installing Corning Optical Communications fiber optic cable; however, refer to the cable specifi simply double the minimum working bend radius. 903 -- Fiber optic service entrance cables. Displaying title 7, up to date as of 5/08/2026. To meet this demand, BPG has invested in plowing equipment to meet our customer's needs. Sometimes a fiber cable is placed in an open trench with several empty sub-ducts for use when future service demands require more c ented in this Note.

## Conditions for pre-burying optical cables in tunnels



This document discusses fiber optic cable placement methodology, including pre-survey, trenching, plowing, and standards. A pre-survey is important for planning ...



Recommended technical requirements are detailed by reference to IEC 60794-3-11 on outdoor optical fibre cables for duct, directly buried, and lashed aerial applications. Changes and additions to these ...



Before starting any buried cable installation, all personnel must be thoroughly familiar with Occupational Safety and Hazard Act (OSHA) regulations. Also, company safety precautions for direct buried cable ...



The recommendation covers mechanical and environmental characteristics that cables should possess to ensure optical fibers perform sufficiently. It also ...



Home / Instruction Sheets / Fiber Optic Cable Direct Burial Guidelines. Need Help?



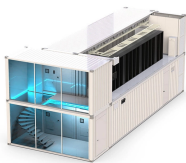
Personnel feeding cable into a feed-chute must make sure that they do not position themselves inside a cable loop. Hearing protection may be required by vehicle operators. Pre-ripping provides a safety ...



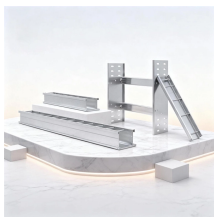
3.1. Cable plows are generally of two types: static and vibratory. Steerable plows, which can be offset to place the cable away from the centerline of the cable plow prime mover, are available for both types.



Each section of the route from splice location to splice location must be adequately prepared before cable installation begins. It is essential to identify all conflicts and obstructions along the route before ...



This section covers Agency requirements for fiber optic service entrance cables intended for aerial installation either by attachment to a support strand or by an integrated self-supporting arrangement, ...



One of the most important steps in the engineering and placement of a new optical cable is the pre-construction site survey. During this survey the placing supervisor will be able to observe any ...



Buried construction is well suited for use in the following conditions: Soils with low clay content. Compatible granular soils. Free from medium or large size rocks. Free of frozen soil and/or debris.



Before starting any buried cable installation, all personnel must be thoroughly familiar with Occupational Safety and Hazard Act (OSHA) regulations. Also, company safety precautions for direct buried cable ...

## Contact Us

For more information, pricing, or custom energy solutions, please contact us:

Website: <https://www.gdroofing.co.za>

Email: [sales@gdroofing.co.za](mailto:sales@gdroofing.co.za)

Phone: +27 72 418 9365

Address: 22 Electron Avenue, Isando, Johannesburg, 1600, South Africa

This document is for informational purposes only. Specifications subject to change without notice.

