

Configure H3C switch ports to optical mode



Overview

The combo enable copper and combo enable fiber commands can be used to flexibly switch the working mode of an interface to meet networking requirements in different scenarios. This article will deeply analyze the functions, configuration logic, and typical application scenarios of. H3C series switches provide a series of configuration commands and command line interfaces for configuring and managing the switch. The command line interface has the following characteristics: | Local configuration via the Console port and AUX port. H3C shall not be liable for technical software features available on the Web interface. com Software version: Release 1111 Document version: 6W100-20150615., which provides rich server access solutions for data. Configure the ports as trunk: Specify the VLANs for the trunk: Activate the trunk port: Provide administrative access to the switch, usually through a web interface or SSH.

Configure H3C switch ports to optical mode



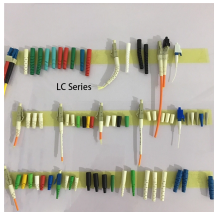
In H3C network devices, a combo port (optical-copper multiplexing port) is a multifunctional interface that integrates two physical media: optical fiber and copper cable. The combo enable copper and combo ...



H3C S5810 series Ethernet switch is a high-performance Gigabit Ethernet switch product independently developed by (Huasan) Co., Ltd., which provides rich server access solutions for data.



H3C S5810 series Ethernet switch is a high-performance Gigabit Ethernet switch product independently developed by (Huasan) Co., Ltd., which provides rich ...



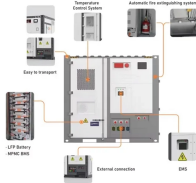
Specifically, the following types of port configuration can be copied from one port to other ports: VLAN configuration, protocol-based VLAN configuration, LACP configuration, QoS configuration, GARP ...



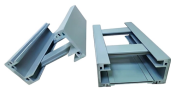
View and Download H3C S5130-30S-HI configuration manual online. S5130-30S-HI switch pdf manual download. Also for: S5130-hi series, S5130-54s-hi, S5130-30c-hi, S5130-30c-pwr-hi, S5130-30f-hi, ...



H3C series switches provide a series of configuration commands and command line interfaces for configuring and managing the switch. The command line interface has the following characteristics:



Hewlett-Packard has acquired the H3C switch-technology to build their new 5xxx series. This tutorial is based on the HP 5920AF-24XG Switch (JG296A) but it can be used also with 51xx/55xx switches.



Configure GigabitEthernet 1/0/1 to implement MAC-based access control so each user is separately authenticated. When a user logs off, no other online users are affected. The ...



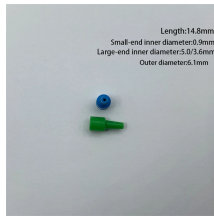
Ready to optimize your network management? Explore our comprehensive guide to H3C device switch commands. Upgrade your skills and ...



Ready to optimize your network management? Explore our comprehensive guide to H3C device switch commands. Upgrade your skills and browse Router Switch for top-notch products now. ...



Learn how to create users, VLANs, enable Telnet and SSH, configure Spanning Tree Protocol, enable DHCP snooping, define trunk ports, and create access ports on H3C switches with step-by-step ...



Loop detection—When the system detects a loop on a port, it does not take any actions on the port, but it will display a red icon for the port on the port state pane.

Contact Us

For more information, pricing, or custom energy solutions, please contact us:

Website: <https://www.gdroofing.co.za>

Email: sales@gdroofing.co.za

Phone: +27 72 418 9365

Address: 22 Electron Avenue, Isando, Johannesburg, 1600, South Africa

This document is for informational purposes only. Specifications subject to change without notice.

