

Construction Site Safety Level 4 Distribution Box Standard



Construction Site Safety Level 4 Distribution Box Standard



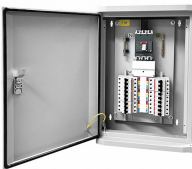
Upon entering an attended substation, each employee, other than employees regularly working in the station, shall report his or her presence to the employee in charge of substation activities to receive ...



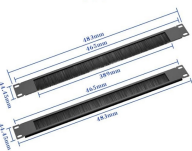
Please provide a copy of the physical and electrical site plans to the CPC before construction begins. Spending some extra time up front can save time and minimize confusion as the project moves ahead.



This Code of Practice provides the details of the general principles to be applied to the design of distribution substations, including substations located at ground floor, basement, upper floor level ...



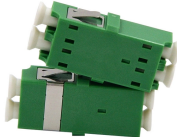
The distribution box and switch box shall be made of steel plate (thickness 1.2-2.0mm) or flame-retardant insulation material. The distribution box is the control center to command all kinds of ...



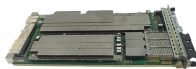
DRESS THE MAJORITY OF CONSTRUCTION ISSUES. IT IS IMPERATIVE TO MAINTAIN STANDARDIZATION, AND THAT COMPLETED JOB ORDERS REFLECT ANY CHANGES ON THE ...



Sections 1926.402 through 1926.408 contain installation safety requirements for electrical equipment and installations used to provide electric power and light at the jobsite.



Last Update: December 5, 2025 This book contains General Safety and Health Standards, as adopted under the Washington Industrial Safety and Health Act of 1973 (Chapter 49.17 RCW). The rules in ...



The UGS Manual provides guidance and standards pertaining to installing and working with underground structures for electrical facilities.



These instructions define the areas in which assistance may be given to a primary customer to coordinate the customer's and DTE Electric systems, to increase the operating safety of high voltage ...



The purpose of the advisory notice [PDF, 232 KB] is to draw the attention of developers and owners of multiple occupancy buildings, and their electrical consultants and contractors to the ...

Contact Us

For more information, pricing, or custom energy solutions, please contact us:

Website: <https://www.gdroofing.co.za>

Email: sales@gdroofing.co.za

Phone: +27 72 418 9365

Address: 22 Electron Avenue, Isando, Johannesburg, 1600, South Africa

This document is for informational purposes only. Specifications subject to change without notice.

