

## Construction site electrical distribution box 16A socket



## Construction site electrical distribution box 16A socket



Portable electricity cases/distribution boards 16A for different purposes, such as distribution, with a different number of sockets, with power meter, for containers, lighting control, concrete curing, etc.  
...



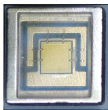
KY series outdoor waterproof industrial socket box is generally used in industrial scenarios and is susceptible to extreme working environments such as high temperature and pressure, humidity, and  
...



Electrical bag 32A with 8 schuko/wall sockets, 1x 16A/400V CEE socket, 1x 32A/400V CEE socket and earth fault switch. Robust and weatherproof enclosure for outdoor use.



Output Sockets: The power distribution box features 3 CEE 3P and 3 CEE 4P female sockets, allowing for versatile connectivity to meet diverse power needs at various sites.



XTevu Socket Distribution Box, 16A CEE Power Box with 2 x 3 Hole and 2 x 5 Hole Outlets, IP67 Mobile Socket Box Electrical Distribution Box for Construction Site



Features covered outlets with hinged lids, double strain relief, and grey-blue finish. Rated for 16A/230V with earthed sockets (2P+E). Designed for construction site and industrial applications requiring ...



Product Description SOCAPEX break out box with 6 PCE Panel-Mount Sockets 16A 2P+E 230V With Loop Through.



The RubberBox RUBTR3 is a high-capacity power distribution unit built in the distinctive Triangle Box format. From a single 16A supply, it provides one 16A outlet alongside twelve 13A sockets, giving ...



Scope of delivery: 1x power distributor with CEE and earthing contact sockets and RCD personal protection - in best quality from brennenstuhl®  
Sockets: 2x CEE 400V/16 A, 4x 230V protective ...



Viox Electric's Mobile Waterproof Socket Box: IP65-IP68 rated, portable power solution for outdoor use. Multiple 16A CEE sockets, built-in safety features. Ideal ...

## Contact Us

For more information, pricing, or custom energy solutions, please contact us:

Website: <https://www.gdroofing.co.za>

Email: [sales@gdroofing.co.za](mailto:sales@gdroofing.co.za)

Phone: +27 72 418 9365

Address: 22 Electron Avenue, Isando, Johannesburg, 1600, South Africa

This document is for informational purposes only. Specifications subject to change without notice.

