

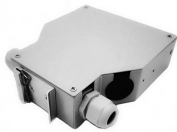
Construction site electrical distribution box obstruction



Construction site electrical distribution box obstruction



Power lines are constant hazards in a construction area. If a power line must be protected or moved, contact utility company before interfering with the construction process or equipment. Where this is not ...



This fact sheet explains how to apply the requirements shown in AS/NZS 3012:2019 Electrical installations – construction and demolition sites (AS/NZS 3012:2019), which is called up as a ...



Securely manage job site power. Build a compliant temporary distribution box, detailing component sizing, critical grounding, and wiring integrity.



Revised guidance aligned to the health and safety when handling electrical devices on construction sites.



The document is an electrical distribution board inspection checklist used by Elite Road Supplies Company-LLC to inspect distribution boards and ensure they meet safety standards.



Electrical equipment provided with ventilating openings shall be installed so that walls or other obstructions do not prevent the free circulation of air through the equipment.



Ensure electrical safety with our comprehensive Distribution Board checklist. Learn how to inspect, maintain, and troubleshoot distribution boards effectively. Safeguard your property and occupants ...



To sum up, qualified construction and maintenance operations, in conjunction with standards and safety measures, can effectively prevent and solve distribution box failures.



This document contains information relating to the placement of electric underground equipment and enclosures. This includes pad-mount, subsurface, and vault installations with or without equipment.



Learn how to install a distribution box safely and correctly. Covers wiring, placement, standards, and expert tips for a compliant setup.

Contact Us

For more information, pricing, or custom energy solutions, please contact us:

Website: <https://www.gdroofing.co.za>

Email: sales@gdroofing.co.za

Phone: +27 72 418 9365

Address: 22 Electron Avenue, Isando, Johannesburg, 1600, South Africa

This document is for informational purposes only. Specifications subject to change without notice.

