

Core Switch Redundancy and Hot Standby



Overview

This project demonstrates a fault-tolerant and highly available Layer 3 network using the HSRP (Hot Standby Router Protocol). It implements redundant multilayer switches, VLAN segmentation, DHCP services, and EtherChannel aggregation to simulate a professional enterprise-grade. In the core layer, I want to have redundancy, which means that if the main core switch of my network has a problem, the backup switch will automatically enter the circuit. What method is there?

04-19-2024 02:04 PM 04-19-2024 04:47 AM You need first to use PO for all connection. 04-19-2024 05:51 AM. Understanding redundancy models and how they impact system availability, recovery, and complexity — with real-world examples and practical advice. Ensure. I have three different networks and 2 vlans. PC0 is a member of vlan 10, PC1 is a member of vlan 20. We will also categorize features based on access and Distribution layer in the Enterprise Network. The idea is simple: if one component (e.

Core Switch Redundancy and Hot Standby



If one controller stops communications, the other assumes control of the I/O system. The M580 Hot Standby system is designed for use where ...



But not all standby setups are the same. In this article, we'll explore the three most common redundancy models: Cold Standby, Warm Standby, and Hot Standby.



This article explores the core concepts of redundancy and resiliency in Cisco networks, their significance, and how Cisco technologies enable businesses to build robust, always-on ...



If one controller stops communications, the other assumes control of the I/O system. The M580 Hot Standby system is designed for use where downtime cannot be tolerated. The system ...



Optimize Network Availability: Explore the nuances of Hot Standby Router Protocol (HSRP) in Switching. Enhance redundancy for seamless, reliable operations.



One of the networks for vlan 10, another one is for vlan 20, third network is for switches. I use first layer 3 switch for vlans and i want to use the switch as a default gateway for switches.



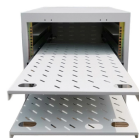
When planning for disaster recovery in system design, the choice between Cold Standby and Hot Standby are two key strategies for recovering from the failure of the main or primary system. ...



In the core layer, I want to have redundancy, which means that if the main core switch of my network has a problem, the backup switch will automatically enter the circuit.



Software and Protocol Redundancy Software redundancy uses protocols and configuration to provide automatic failover between hardware components. Common examples ...



In this session, Our focus will be to learn about the existing and new High Availability features present on the Catalyst 9k Switches. We will also categorize features based on access and Distribution layer in ...



This project demonstrates a fault-tolerant and highly available Layer 3 network using the HSRP (Hot Standby Router Protocol). It implements redundant multilayer switches, VLAN ...



One of the networks for vlan 10, another one is for vlan 20, third ...

Contact Us

For more information, pricing, or custom energy solutions, please contact us:

Website: <https://www.gdroofing.co.za>

Email: sales@gdroofing.co.za

Phone: +27 72 418 9365

Address: 22 Electron Avenue, Isando, Johannesburg, 1600, South Africa

This document is for informational purposes only. Specifications subject to change without notice.

