

Current meter in the distribution box



Current meter in the distribution box



6L2-A/V Pointer Current and Voltage Meter Test Distribution Box 100/150/200/250/300/400 Ammeter Voltmeter, Accessories



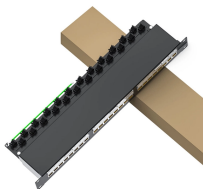
A step-by-step guide to testing a breaker box with a multimeter was provided, covering voltage testing, continuity testing, and current measurement. Each test was explained in detail, with ...



Equipped with a multifunctional electricity meter, leakage circuit breaker, and a maximum rated current of 20A branch circuit breaker; SAFE AND RELIABLE: This power outlet box comes with 4 NEMA 5 ...



An electric meter, monitored by your electric utility company, is mounted where the electricity enters your house. The main panel is usually right next to or under the meter.



ProX RITA X-PWCONX6RITA PowerCenter — 6-outlet AC power distribution box with powerCON compatible locking input and V& A meter, backed by 40 years of ProX live performance expertise.



Equipped with a multifunctional electricity meter, leakage circuit breaker, and a ...



No customer or third party equipment is allowed to be attached to the meter, associated metering equipment, nor located inside a meter or current transformer enclosure.



Simplify job site power management with the power 4-outlet power distribution box. Featuring an integrated energy meter and high-performance circuit breakers, this UL-listed hub protects power ...



The customer shall provide, at a location approved by the Company and free of expense to the Company, a suitable place for the meter or meters and any other supply, protective, or control ...



You can often determine the size of the home's electrical service by looking at the electrical meter outside the house. Look for the point at which the main service wires from the utility ...



The main service panel, also known as the breaker box, is the central distribution point for the home's electrical system. Electricity flows from the utility company through power lines and ...

Contact Us

For more information, pricing, or custom energy solutions, please contact us:

Website: <https://www.gdroofing.co.za>

Email: sales@gdroofing.co.za

Phone: +27 72 418 9365

Address: 22 Electron Avenue, Isando, Johannesburg, 1600, South Africa

This document is for informational purposes only. Specifications subject to change without notice.

