

Customization Process for Arc-Shaped Cable Trays



Customization Process for Arc-Shaped Cable Trays



Cable tray sections must be in accordance with the cable types and/or the number of cables installed in it, respecting the maximum filling ratio, according to the cable tray type.



Discover industry-leading customized cable tray solutions featuring advanced materials, intelligent design, and complete regulatory compliance. Perfect for industrial and commercial applications ...



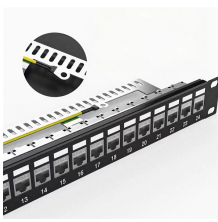
Our lineup of aluminum, steel, stainless steel, and fiber glass cable trays and channels has been renowned throughout North America for decades. Below you will find files and other design tools in ...



The professional design process includes comprehensive documentation and technical support, simplifying installation and maintenance procedures. Custom solutions can integrate specific ...



Our lineup of aluminum, steel, stainless steel, and fiber glass cable trays and channels has been renowned throughout North America for decades. Below you ...



Energy saving molded cable trays are designed to reduce energy consumption and resource waste through structural optimization and functional design. They utilize a mold-press forming process, ...



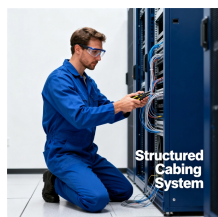
That's why we now offer customization of our cable trays, on in individual basis or in bulk! Let us know exactly what you need, and we'll be able to fit your specifications to a tee.



When fitting cable trays and their accessories, the products are cut on site to create changes of direction, adjust sections, etc. Damage can also occur during handling; as a result, both the ...



Design your perfect customized cable trays! Customize materials, sizes, structures, and finishes. Reliable, durable, and tailored for your project's success.



Heavy duty cable tray roll forming machines enable efficient mass production of customized cable trays. This guide has provided a detailed overview of working principles, types, ...



Snake Tray has the engineering expertise and manufacturing capabilities to help you design the right solution in cable management, power distribution or enclosures.



This document provides details on installing cable trays and their support systems. It includes diagrams showing how to mount cable trays on walls using pre-fabricated flanges or channels.

Contact Us

For more information, pricing, or custom energy solutions, please contact us:

Website: <https://www.gdroofing.co.za>

Email: sales@gdroofing.co.za

Phone: +27 72 418 9365

Address: 22 Electron Avenue, Isando, Johannesburg, 1600, South Africa

This document is for informational purposes only. Specifications subject to change without notice.

