

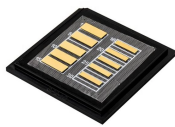
Detailed diagram of the 123-level power distribution box on the construction site



Detailed diagram of the 123-level power distribution box on the con



BOSECKER construction site power distributors are designed and manufactured in accordance with the manufacturer standard IEC 61439 and user standard IEC 60364. The robust sheet steel housing has ...



Here is an outline of the Power Distribution Panels starting from the Main Switchboard to the smallest Distribution boards. We explain their purposes and functions in details as well as the equipment that ...



The document is a detailed riser diagram for a power distribution system in a building, outlining various electrical components and their locations across multiple levels.



These diagrams are used by electricians, maintenance teams, and facility managers to identify power distribution paths and ascertain the correct layout for various electrical loads.



Download Schneider Electric Electrical Distribution CAD files in over 40 different file formats



Designing a power distribution board is not just about placing components inside a metal box. It requires a deep understanding of international standards, safety practices, and electrical ...



These plans provide a visual representation of the electrical systems to be installed, including power sources, distribution networks, lighting, grounding systems, and other electrically ...



Riser Diagram cal layout of a building's major power distribution components. The emphasis for a riser diagram is identification of the equipment and its locatio in the building. This is commonly used in ...



What is a Distribution Box? A distribution box, or DB box, is a circuit breaker enclosure. It is a vital part and central hub of any electrical system. The hub distributes electrical power from a ...



Power supply on construction sites is crucial to run all the equipment and tools needed to complete a project. However, distributing power correctly on a construction site can be challenging, especially ...

Contact Us

For more information, pricing, or custom energy solutions, please contact us:

Website: <https://www.gdroofing.co.za>

Email: sales@gdroofing.co.za

Phone: +27 72 418 9365

Address: 22 Electron Avenue, Isando, Johannesburg, 1600, South Africa

This document is for informational purposes only. Specifications subject to change without notice.

