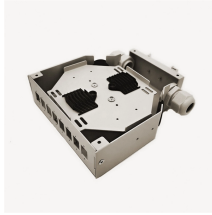


## Dimensions of Electrical Distribution Boxes in Public Buildings



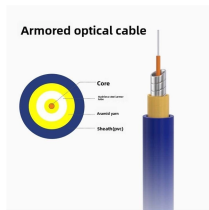
## Dimensions of Electrical Distribution Boxes in Public Buildings



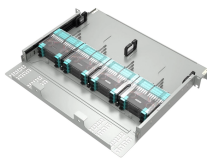
The quantity and size of AE electric distribution infrastructure on the AE side of the point of service is at AE's discretion. Regarding equipment and material sizing, Austin Energy is bound to the National ...



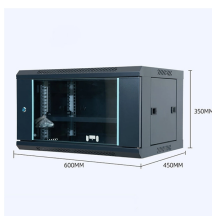
Electrical enclosure sizes are not universal, but most manufacturers follow common size families. This guide explains typical wall-mount and floor-standing dimensions, how to read catalog ...



General Technical Particulars for LT Distribution Boxes : - The L.T. Distribution Boxes should be of the dimensions as per the drawing & details in the table furnished.



Access SCE's Distribution Manuals, including Electrical Service Requirements and Underground Structures guidelines, for electrical service connections.



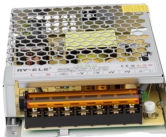
This guide explores control panels, electrical boxes, breaker panels, bus bars, junction boxes, and custom enclosures to help you understand their sizes, types, and common applications.



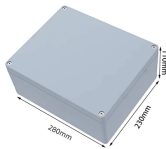
When calculating the electrical service and feeder sizes for buildings, pay particular attention to the Wisconsin Electrical Code - SPS 316. This code allows for the use of diversity factors or historical ...



Linkwell offers a wide range of electrical box dimensions, so you can always find the right fit for your industrial or commercial project. Tip: Always measure your space before you install your box.



Minimum Size: Electrical manholes shall be a minimum size of 10"x10" with a standard height of 96-inches minimum ceiling height. For shallow installations and only when avoiding conflicting ...



This report provides a comprehensive analysis of electrical distribution board (DB) box sizes, including physical dimensions, electrical capacities, and market trends based on current 2025 ...



Learn standard electrical box dimensions for outlets, switches, and junction boxes. Compare sizes, depths, volume, and clearance for safe installations.

## Contact Us

For more information, pricing, or custom energy solutions, please contact us:

Website: <https://www.gdroofing.co.za>

Email: [sales@gdroofing.co.za](mailto:sales@gdroofing.co.za)

Phone: +27 72 418 9365

Address: 22 Electron Avenue, Isando, Johannesburg, 1600, South Africa

This document is for informational purposes only. Specifications subject to change without notice.

