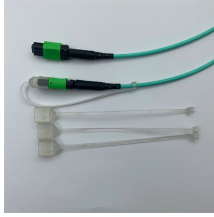


Dimensions of Emergency Communication Cabinets



Dimensions of Emergency Communication Cabinets



Shop Drawings: For communications equipment room fittings. Include plans, elevations, sections, details, and attachments to other work. Detail equipment assemblies and indicate dimensions, ...



Each frame will have two L-shaped top angles, two L-shaped base angles, a top and bottom pan, and four C-shaped equipment-mounting channels (a front and rear pair). The rack will assemble with nut ...



Desk-communication outlet boxes shall be a minimum of 4 11/16" square, mounted to accommodate a single gang plaster ring for a single gang faceplate. Standard mounting height shall be 18", centered ...



Nominal dimensions for server cabinets are 84" (2134mm) tall, 23.6" (600mm) wide, and 48" (1220mm) deep, including side panels and doors. Minimum depth is 46" (1168mm).



ERCES requirements, safety, and building codes for buildings by City, County, and State. Use the map below to find your local ERCES documents. Zoom in on your location and click the pin over your city ...



332/334 CCTV Equipment Cabinets are ideal for accommodating all communications requirements. Patterned after the industry standard 170/2070 style cabinet, the 332/334 CCTV Equipment cabinet's ...



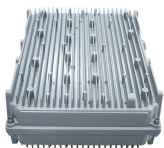
- The measurements provided below are approximate and subject to change without notice.
- Read the “AED Cabinet Installation and Operation Guide” provided with your cabinet prior to installation. • ...



For shipping, these structures must meet strict dimensional requirements, including protrusions such as HVAC, RF entry assemblies, or AC entrances. In the US, state certification may be required if pre-fab ...



Selecting the right telecom cabinet begins with understanding its size and space requirements. Proper planning ensures your equipment fits perfectly, remains accessible, and ...



Cabinets shall be fully assembled by the manufacturer with the components listed below. Individual component part numbers provided for information only.



The test for emergency responder radio coverage will be considered passed when 90% of the test locations on each floor are able to pass two-way communications to and from the outside of the ...



ERCES requirements, safety, and building codes for buildings by City, County, and State. Use the map below to find your local ERCES documents. Zoom in on your ...



At their core, emergency communication shelters are self-contained units housing comprehensive communication equipment, power systems, and ...

Contact Us

For more information, pricing, or custom energy solutions, please contact us:

Website: <https://www.gdroofing.co.za>

Email: sales@gdroofing.co.za

Phone: +27 72 418 9365

Address: 22 Electron Avenue, Isando, Johannesburg, 1600, South Africa

This document is for informational purposes only. Specifications subject to change without notice.

