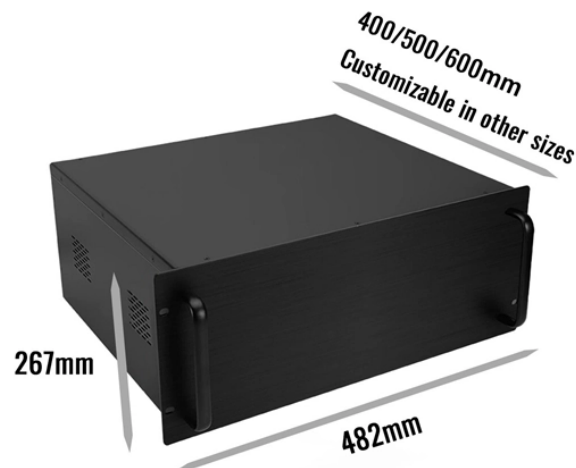


# Dimensions of Power Distribution Box 21



## Overview

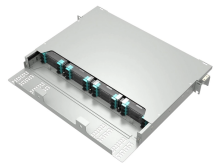
The Merlin Gerin Complete Set of Power Cabinet Distribution XL-21 Series (XL-21/2000×1000×400) is a high-performance electrical distribution solution designed to meet the needs of modern power distribution systems. XL-21 low-voltage power distribution cabinet is widely used in power plants and industrial and mining enterprises, in three-phase AC 500V below three-phase three-wire, three-phase four-wire, three-phase five-wire and other power distribution systems or for lighting power distribution, installation. This comprehensive guide delves into the specifications and standards of the XL-21 power distribution cabinet, providing valuable insights for engineers, facility managers, and electrical contractors. We'll explore its key features, installation requirements, safety standards, and maintenance. Standard Type (P Type): This version has a cabinet height of 1700mm or 1800mm and is designed for independent installation. It can be equipped with entry and exit holes at the top as required. Prefabricated customized boxes are used, which are divided into low-voltage warehouse, medium-voltage warehouse, machine warehouse and spare parts warehouse according to different functions, including all power distribution. PROFESSIONAL MANUFACTURER OF XL Low

Voltage Power Distribution Cabinet General XL Low Voltage Power Distribution Cabinet Low Voltage Switchgear The XL-21 low voltage power distribution cabinet is suitable for three-phase four-wire systems with AC voltages up to 500V. It is primarily used for power.

## Dimensions of Power Distribution Box 21



This comprehensive guide delves into the specifications and standards of the XL-21 power distribution cabinet, providing valuable insights for engineers, facility managers, and electrical ...



The overall and installation dimensions of the A-type structure of the XL-21 low-voltage power distribution cabinet are shown in Figure 1. The overall and installation dimensions of the B-type ...



Below are the typical dimensions for a standard configuration. This is an example of a single-line diagram (SLD) for an XL-21 power distribution application. We build ...



**Spacious Design:** The large dimensions of the XL-21 power cabinet (2000×1000×400 mm) provide ample space for electrical components, including circuit breakers, fuses, and more.



The XL-21 low voltage power distribution cabinet is suitable for three-phase four-wire systems with AC voltages up to 500V. It is primarily used for power distribution purposes in power plants, industrial ...



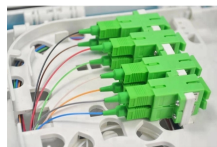
Below are the typical dimensions for a standard configuration. This is an example of a single-line diagram (SLD) for an XL-21 power distribution application. We build each cabinet to your project's ...



XL-21 type low-voltage power distribution cabinet (box) is suitable for power distribution and industrial and mining enterprises AC voltage of 500V and below three-phase three-wire, three-phase four-wire, ...



The main distribution box adopts self-design of new components, compact structure, beautiful appearance, easy maintenance, a variety of wiring options for users to choose, it is an ideal ...



The main distribution box adopts self-design of new components, compact structure, beautiful appearance, easy maintenance, a variety of wiring options for users to choose, it is an ideal ...



XL Low Voltage Power Distribution Cabinet suitable for three-phase four-wire systems with AC voltages up to 500V. It is primarily used for power distribution purposes in power plants, indu The XL-21 low ...



You can customize the cabinet's dimensions: width (400-1000mm), height (1600-2200mm), and depth (400-800mm). The cabinet uses high-quality electrolytic steel or galvanized steel with a thickness of ...

## Contact Us

For more information, pricing, or custom energy solutions, please contact us:

Website: <https://www.gdroofing.co.za>

Email: [sales@gdroofing.co.za](mailto:sales@gdroofing.co.za)

Phone: +27 72 418 9365

Address: 22 Electron Avenue, Isando, Johannesburg, 1600, South Africa

This document is for informational purposes only. Specifications subject to change without notice.

