

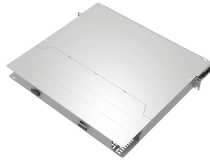
Dimensions of the French PZ30 distribution box



Overview

The PZ30 distribution box is a standardized size measuring 30x30x40 centimeters, widely adopted in global logistics for uniformity in storage, shipping, and handling. Its compact dimensions balance payload capacity with space efficiency, reducing costs and minimizing waste in. PZ30 is a 9mm modular modular distribution box, which is a low-voltage terminal power distribution equipment. It is suitable for AC 50Hz, 220V/380V (single-phase three-wire / three-phase five-wire) terminal circuits with a total current of $\leq 100A$. The PZ30 modular terminal combination electrical appliance is a device for installing terminal electrical appliances. It has been widely used around the world. With modern aesthetics, safety-focused construction, and user-friendly features, it meets the needs of diverse applications. Its durable design. Loading zoom.

Dimensions of the French PZ30 distribution box



Low voltage distribution boxes like the PZ30 are generally designed for 380V/220V AC power systems and can accommodate a range of current ratings depending on project requirements.



PZ30 distribution box /distribution board The series products are made of ...



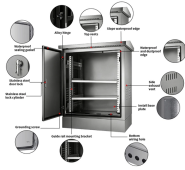
PZ30 Plastic Electrical Distribution Box meets standards of GB7251.3 and GB17466. The MCB distribution box has a neutral terminal block, a ground terminal block and a DIN rail, it can be used ...



PZ30 distribution box is a terminal combination electrical distribution box, suitable for various types of residential buildings, high-rise buildings, hotel buildings, shopping malls, hospitals, industrial and ...



PZ30 series flush type and surface distribution boxes/distribution boards are mainly used in the circuit Of AC 50Hz, rated voltage 220V/380V, and acted to install the modular combination equipment.



This empty box is specially designed for installing circuit breakers and leakage protectors, offering centralized and safe power distribution and component protection for residential electrical systems.



PZ30 distribution box /distribution board The series products are made of standard cold-rolled steel and use powder-coating techniques to process the crust. The outlook is beautiful and fit for surface and ...



DRJXF/PZ30 series power distribution box is a power distribution device with various control functions designed and assembled according to the model, specification and quantity of components.



The PZ30 distribution box is a standardized size measuring 30x30x40 centimeters, widely adopted in global logistics for uniformity in storage, shipping, and handling.



Its main features are the modular size of electrical appliances, track-based installation, artistic appearance, and safe use. It has been widely used around the world.



PZ30 is a 9mm modular distribution box, which is a low-voltage terminal power distribution equipment. It is suitable for AC 50Hz, 220V/380V (single-phase three-wire / three-phase five-wire) ...



PZ30 series flush type and surface distribution boxes/distribution boards are mainly used in the circuit Of AC 50Hz, rated voltage 220V/380V, and acted to install the ...

Contact Us

For more information, pricing, or custom energy solutions, please contact us:

Website: <https://www.gdroofing.co.za>

Email: sales@gdroofing.co.za

Phone: +27 72 418 9365

Address: 22 Electron Avenue, Isando, Johannesburg, 1600, South Africa

This document is for informational purposes only. Specifications subject to change without notice.

