

Discontinuous cable tray



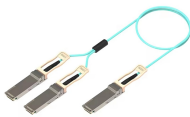
Discontinuous cable tray



It provides rules for acceptable wiring methods that can be installed in cable trays, including conditions for use. It addresses uses permitted and not permitted for cable trays.



The NEC also states that cable tray systems shall be permitted to have "mechanically discontinuous segments" between cable tray runs and equipment. The code permits wiring across ...



Our wind certification report provides you with list of acceptable B-Line series cable tray supports, fittings and covers based off of the environmental conditions, cable loading, and type of cable tray in your ...



Do not allow the cables to drop in the cable tray as this may damage the cable and/or the cable tray. If cable connections will not be made immediately, the pulling eye or basket grip should be removed ...



Each tray run should be finished before cable installation, and protective covers must be compatible with the tray material. Trays can extend through walls and floors, provided they meet specific installation ...



What is the NEC rule regarding the continuity of cable tray systems and their accessibility? A5. Cable trays must be installed as a complete system, except mechanically discontinuous segments between ...



The cable tray systems are permitted to have mechanically discontinuous segments between cable tray runs or between cable tray runs and equipment. As a whole, the system shall provide a secure, safe ...



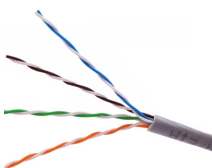
What is the NEC rule regarding the continuity of cable tray systems and their accessibility? A. Cable trays must be installed as a complete system, except mechanically ...



It provides rules for acceptable wiring methods that can be ...



Cable tray systems are permitted to have mechanically discontinuous segments between cable tray runs or between cable tray runs and equipment.



An expansion splice plate may have slotted holes to allow for movement in the cable tray. A bonding jumper is required where cable tray systems are mechanically discontinuous.

Contact Us

For more information, pricing, or custom energy solutions, please contact us:

Website: <https://www.gdroofing.co.za>

Email: sales@gdroofing.co.za

Phone: +27 72 418 9365

Address: 22 Electron Avenue, Isando, Johannesburg, 1600, South Africa

This document is for informational purposes only. Specifications subject to change without notice.

