

Distance between fiber optic cable junction box and building



Distance between fiber optic cable junction box and building



This setup may vary from building to building scenario, but this will be typically at the corners of the building or on any raised structure on the roof-top. The exact details will be advised at the design ...



In practice, a fiber network has no limitations in transmission distance, and therefore, no connection rooms, switches and panels are needed on every floor or every building.



Estimate fiber distance from measured timing, fiber type, and slack with this calculator. Compare spans, delay, and install length now.



Fiber optic cable sequential numbers are required at each pole location and vault wall. Sequential numbers will identify conduit length, and slack left in vaults and at poles.



Where no physical barrier exists, no duct or cable shall be laid within a distance of 600mm (24 inches) measured horizontally, nor cross within a distance of 300mm (12 inches) measured vertically from ...



We're not talking about hundreds of metres, maybe 20-30. So far, one plusnet person has said, sure that's no problem, there won't be any drop-off for up to 90m (which is what we'd gathered ...



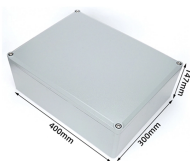
The portion of the pathway system that permits the placing of backbone cables between the entrance location and all cross-connect points within a building and between buildings.



From personal experience, I know that 10 metres is fine, and I have read here and elsewhere that up to 30m should usually be fine. I believe the bend diameter is usually expressed as ...



Reviewing the nbn® Fibre to the Premises explained (FTTP) document I noted that there is reportedly a max distance of 12m permitted between the external utility box and the location of the ...



Since building systems may require many types of cables, both fiber and copper, these cables should be separated to protect the fiber cables from damage and all cables marked properly.



The "straight line" distance between the point of entry of the cable (very close to the existing point of entry for the copper wire) and my preferred ONT location is approx 2metres, ...

Contact Us

For more information, pricing, or custom energy solutions, please contact us:

Website: <https://www.gdroofing.co.za>

Email: sales@gdroofing.co.za

Phone: +27 72 418 9365

Address: 22 Electron Avenue, Isando, Johannesburg, 1600, South Africa

This document is for informational purposes only. Specifications subject to change without notice.

