

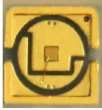
Distance between fire pipe and electrical distribution box



Overview

The National Electrical Code (NEC) does not specifically address plumbing pipe clearance, but requires an area clear of any obstructions that is 2'-6" wide, 3'-0" deep, and 6'-6" high around the front of a panel [NEC 110]. Electrical clearances set the minimum safe distances for panels, overhead lines, pools, and buried wiring — and ignoring them has real consequences. These regulations minimize potential hazards that arise when the two utility systems are in close proximity during new construction or renovation. NEC Article 314 establishes requirements for the installation and use of electrical boxes, conduit bodies, fittings, and handhole enclosures. This means that electricians and. Appendix A added references to IEEE Guides mitigating bird and wildlife-related power interruptions.

Distance between fire pipe and electrical distribution box



Explore the key guidelines on how far electrical must be from plumbing for safety and code compliance in Canadian homes.



Explore the key guidelines on how far electrical must be from plumbing for safety and code compliance in Canadian homes.



If it's at the level of the heads, you need to keep the pipe at least 3" away to be completely safe. If you want it closer, you need the documentation on the particular model of ...



No plumbing pipes or other items are allowed in this area, except that other electrical equipment that is part of the panel installation is allowed above or ...



Minimum clearances are established for work spaces in front of high voltage - electrical equipment such as switchboards, control panels, switches, circuit breakers, switchgear and motor controllers. These ...



Is there a suggested or required distance that a pullbox needs to be? This is on a run of approx. 300 feet.



Regardless of the wiring method, box fill calculations apply equally to all cables. Use our conduit fill calculator to determine the calculation in your specific case.



Electrical clearances are the minimum separation distances the National Electrical Code (NEC) requires between wiring, panels, overhead conductors, and everything around them. These ...



Primary Distribution Conduits (along main run and on laterals between underground structures and associated equipment) - size as needed to satisfy conduit fill and jam ratio criteria for the selected ...



Recommended clearance: At least 1 inch between electrical boxes/conduit and plumbing pipes. Best practice: Run electrical and plumbing on opposite sides of the stud whenever possible.



Mandatory separation distances between electrical components and gas lines are governed by national and local codes prioritizing public safety. These regulations minimize potential hazards that arise ...



No plumbing pipes or other items are allowed in this area, except that other electrical equipment that is part of the panel installation is allowed above or below the panel, as long as it does ...

Contact Us

For more information, pricing, or custom energy solutions, please contact us:

Website: <https://www.gdroofing.co.za>

Email: sales@gdroofing.co.za

Phone: +27 72 418 9365

Address: 22 Electron Avenue, Isando, Johannesburg, 1600, South Africa

This document is for informational purposes only. Specifications subject to change without notice.

