

## Distribution Box Acceptance Marking



## Distribution Box Acceptance Marking



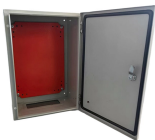
Quick Service Guides provide a two-page overview for specific mail classification and preparation and can be found on the Postal Explorer Web site with direct links to the DMM.



A postmark is a marking applied by the Postal Service to a mailpiece. If applied at a retail unit, the postmark displays the name or location of the retail unit and the date on which the mailpiece ...



Understand your distribution box labels to identify circuits, improve safety, and troubleshoot electrical issues in your home with confidence.



Prepare and label all pouches and containers based on the national registered mail distribution labeling list as directed by the area distribution network office.



New business mailers can start with Business Mail 101, which provides an overview of business mail and takes mailers through the decisions they will make when designing a mailing. Both ...



**COMPLIANCE GUIDELINES FOR MARKING AND LABELING SYSTEMS** Most electrical products and equipment are required to be marked with specific safety-related information and meet permanency ...



Distribution boxes must comply with UL 50 (enclosures) and UL 508A (industrial control panels) standards. These standards are rigorous about short-circuit current ratings (SCCR), proper ...



The acceptance criteria for distribution box/cabinet debugging should be based on national specifications, design drawings and industry requirements, covering core dimensions such as ...



**Electrical Equipment Did You Know?** Proper labelling at all distribution points, circuit breakers, fuses and switches is required during installation, as well as whenever .



Customers who wish to retain a record or proof of the date on which the Postal Service first accepted possession of their mailpiece (s) may purchase a Certificate of Mailing. Registered Mail ...

## Contact Us

For more information, pricing, or custom energy solutions, please contact us:

Website: <https://www.gdroofing.co.za>

Email: [sales@gdroofing.co.za](mailto:sales@gdroofing.co.za)

Phone: +27 72 418 9365

Address: 22 Electron Avenue, Isando, Johannesburg, 1600, South Africa

This document is for informational purposes only. Specifications subject to change without notice.

