

Distribution Box Circuit Design Table



Overview

This publication contains the following new or updated information. This list includes substantive updates only and is not intended to reflect all changes.



Distribution Box Circuit Design Table



It includes several options for customizing the circuit layout, including the numbering of each component, the orientation of the components in relation to one another, and the type of wire or ...



Power Distribution Equipment is a term generally used to describe any apparatus used for the generation, transmission, distribution, or control of electrical energy.



That's what happens when you overload circuits. But with some simple math and planning (don't worry, we'll walk through it!), you can design a system that works smoothly even when you're running all the ...



This guide is intended to present the fundamentals of power system design for commercial and industrial power systems. It is not designed as a substitute for educational. The ...



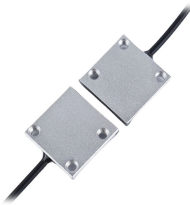
The document provides details for designing the electrical distribution box and circuits for a residence. It includes specifications for the main circuit breaker such as size, type, and tripping capacity.



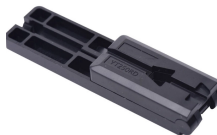
Here you can select the type of mounting of the small distribution board, the mains system, the desired type of connection and the need for surge protection using simple menus or selection fields.



Optimize your cable distribution box layout for safety and efficiency. Learn industrial best practices using Chuanli's IEC-standard outdoor and custom boxes.



Distribution Box (DB) circuit diagram. [...] Single-phase short-circuits are most often faults in electrical systems. The analysis of this damage type is taken for backup power supply...



Wiring diagram shows both PNP and NPN wiring. Actual units use PNP status indicator, NPN status indicator, or neither. Dimensions are shown in mm (in.). 10 [10 m (32.81 ft)] for standard cable ...



This guide discusses the main considerations that must be taken into account to obtain an optimal system design. Because the characteristics of each load, process, or other issue, are ...

Contact Us

For more information, pricing, or custom energy solutions, please contact us:

Website: <https://www.gdroofing.co.za>

Email: sales@gdroofing.co.za

Phone: +27 72 418 9365

Address: 22 Electron Avenue, Isando, Johannesburg, 1600, South Africa

This document is for informational purposes only. Specifications subject to change without notice.

