

## Distribution Box Switches and Wiring



### Overview

What Is a Distribution Box?

A distribution box, also known as a power distribution unit, is a critical component in any electrical system. It is the control center for electricity in your home or business. It takes the electrical power coming in and distributes it to different circuits. Each circuit then powers various devices and appliances. With the electrical flow, safety is almost impossible. Why Proper Installation Matters Installing a distribution box correctly is about more than just making sure the lights turn on. It's about safety, efficiency, and reliability. A poorly installed distribution box can lead to a host of problems. These include electrical fires, short circuits, and more. A distribution box is a crucial part of any electrical system. It's divided into two main sections that work

A distribution box, also known as a power distribution unit, is a critical component in any electrical system. It is the control center for electricity in your home or business. It takes the electrical power coming into the building and distributes it to different circuits. Each circuit then powers various devices and appliances. With the electrical flow, safety is almost impossible. Why Proper Installation Matters Installing a distribution box correctly is about more than just making sure the lights turn on. It's about safety, efficiency, and reliability. A poorly installed distribution box can lead to a host of problems. These include electrical fires, short circuits, and more. A distribution box is a crucial part of any electrical system. It's divided into two main sections that work

together to keep everything running smoothly and safely. **Understanding Types and Models** When choosing a distribution box, it's essential to know that not all boxes are identical. There are different types, each designed for specific needs. For example, small power distribution boxes are perfect for homes. They handle everyday electrical loads and keep things running smoothly. Conversely, industrial distribution boxes are built for heavy-duty tasks. They are used in factories or large buildings where the electrical demand is much higher. So, how do you pick the right one?

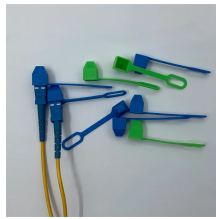
**Material and Construction Considerations** Once you've chosen the type, the next step is to look at the materials. The material of the distribution box plays a big role in its safety and accessibility. **Safety and Accessibility** The location of a distribution box is key. You want it in a safe, dry, and easy-to-reach spot. Why?

Because water and electricity don't mix. If the box gets wet, it can cause serious problems, like short circuits or fires. That's why you should always choose a dry area, away from water sources like sinks, showers, or outdoor exposure. Accessibility is just as important. You'll need to check on the box from time to time, whether it's for routine maintenance or in an emergency. **Standard Installation Heights and Positions** The height at which you install your distribution box matters, too. For most homes, the standard height is around 1.5. **Grounding and Neutral Connections** Proper grounding is essential for electrical safety, as it keeps everyone safe by preventing electrical shocks. It works by directing any stray electricity safely into the ground instead of letting it build up and cause harm. So, when you install a distribution box, make sure all metal parts are correctly grounded, including the box itself and any metal components inside. Neutral connections are just as important. The neutral wire carries electricity back to the source after it has powered yo. **Proper Wiring Techniques** Wiring inside the distribution box needs to be neat and organized. Messy wiring isn't just ugly; it's dangerous. Tangled or impr.

## Distribution Box Switches and Wiring



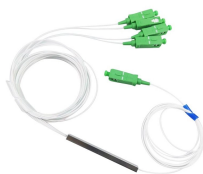
This article provides a detailed guide on how to wire a switch box correctly, including the different types of switches and their connections. Whether you are a beginner or an experienced DIYer, this wiring ...



The above mentioned electrical wiring accessories and protective devices are used to control and distribute electric supply (safely to connected electrical appliances) around your home. The following ...



Hey, in this article we are going to see the Single Phase Distribution Box Wiring Diagram and Connection Procedure. A distribution board or distribution box is where the main power supply is ...



Learn how to install a distribution box safely and correctly. Covers wiring, placement, standards, and expert tips for a compliant setup.



Find out how to properly wire an electrical panel box with a comprehensive diagram and step-by-step instructions.



Box installation: Make sure that Distribution box has been correctly installed and fixed. Material preparation: Prepare the required circuit breakers, wires, wiring ties and other materials, and ...



Understanding the key components of a distribution box helps you make informed decisions about installation and maintenance. Each element plays a specific role in ensuring safe ...



In this video, we'll walk you through the process of wiring a home distribution box with a detailed connection diagram.



Learn how to read and understand a switch box wiring diagram. Find out how different connections are made and how to troubleshoot common issues.



The above mentioned electrical wiring accessories and protective devices are used to control and distribute electric supply (safely to connected electrical appliances) ...



Distribution boxes are used for power distribution, circuit protection and cable management, while junction boxes are only used for wire connection and branching.

## Contact Us

For more information, pricing, or custom energy solutions, please contact us:

Website: <https://www.gdroofing.co.za>

Email: [sales@gdroofing.co.za](mailto:sales@gdroofing.co.za)

Phone: +27 72 418 9365

Address: 22 Electron Avenue, Isando, Johannesburg, 1600, South Africa

This document is for informational purposes only. Specifications subject to change without notice.

