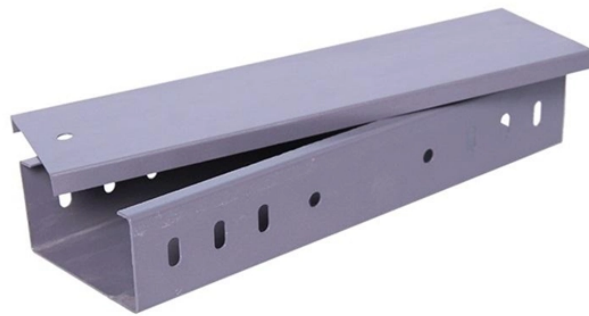


Distribution box ATDF box



Distribution box ATDF box



Fiber distribution box provides a secure and organized way to manage fiber optic cables, protecting them from external damage and minimizing the risk of network ...



Fiber distribution box provides a secure and organized way to manage fiber optic cables, protecting them from external damage and minimizing the risk of network downtime. Fiber distribution box is ...



Enclosures are tailored with internal or external patching, splicing and/or distribution options to meet existing requirements and provision for future expansion.



Explore reliable FTTH terminal boxes for secure fiber termination and distribution. Wall-mounted design, robust build, for home and industrial optical networks.



outdoor applications. The distribution box is designed to be robust and is provisioned with sufficient RIBS to withstand an high external impact. It has multiple configurations, making it universal for use with ...



Fiber distribution box is made of high-strength engineering plastics, anti-UV, anti-aging ability. The distribution box is sealed adopts buckle + two screw type structural seals, and the left and right ...



Fiber Distribution Boxes are indispensable in the realm of fiber optic networking, providing not just connectivity but also protection and management of one of the most critical aspects of modern ...



Learn the key differences between Fiber Optic Termination Box, Distribution Box, and ODF for FTTH/FTTB networks. Optimize fiber deployment and network design now.



These boxes are designed to provide a secure and organized environment for the distribution of fiber optic cables to various locations. In this article, we will discuss what a fiber optic distribution box is, ...



AZE's Outdoor Fiber Optic Distribution Box is applicable in FTTH project and suitable for building's outer walls application; They can distribute cables after installing splitters and also can draw out room fiber ...



Fiber Optic Distribution Box, 12 Port Wall Mount Enclosure with 12 SC APC Adapters, Singlemode, FTTH, IP65 Waterproof Outdoor/Indoor Use - 9.45" x 8.66" x 2.56"

Contact Us

For more information, pricing, or custom energy solutions, please contact us:

Website: <https://www.gdroofing.co.za>

Email: sales@gdroofing.co.za

Phone: +27 72 418 9365

Address: 22 Electron Avenue, Isando, Johannesburg, 1600, South Africa

This document is for informational purposes only. Specifications subject to change without notice.

