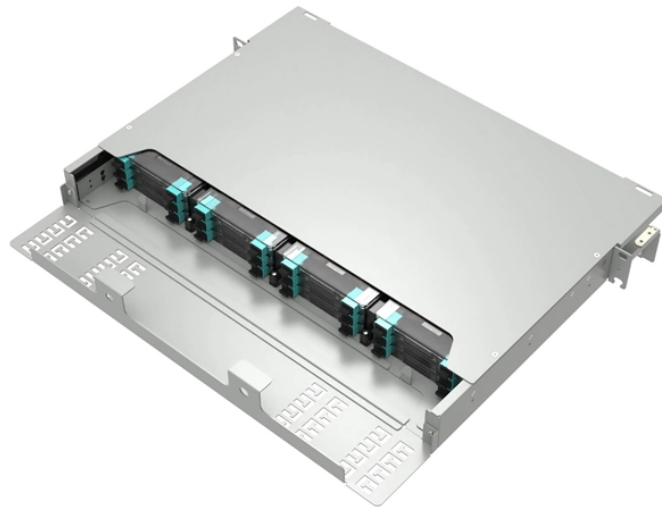


Distribution box switch box three-level



Distribution box switch box three-level



These boxes, sometimes called spider boxes, let you connect many things to one power source. They help send power to lights, sound systems, food trucks, and radios.



Connects to end-use equipment via switch boxes, forming a three-tier power distribution system. Residual current devices (RCDs) at both the tertiary (equipment-level) and secondary (zone-level) ...



Three level distribution box: a distribution box is set under the main distribution box, a switch box is set under the distribution box, and electrical equipment is set under the switch box to form a three-level ...



The power distribution box can be mounted onto the 19" profiles exactly where the customer desires. Benefit: This box allows the electrical switches to be segregated from the other components installed ...



These boxes, sometimes called spider boxes, let you connect many things to one power source. They help send power to lights, sound systems, food trucks, and ...



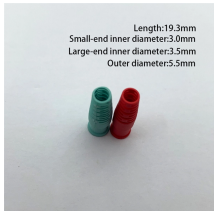
(1) The construction power distribution system should be equipped with a main distribution box, a distribution box, and a switch box, which should be arranged in a hierarchical ...



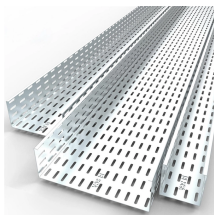
A distribution box is installed under the main distribution box, and a switch box is installed under the distribution box. Electrical equipment is installed under the switch box, forming a three ...



Three level distribution: That is, a distribution electric box is arranged under the general distribution box, and a switch box is arranged under the switch box, and electrical equipment is arranged under the ...



The three-level distribution system refers to a system that distributes electric power through three levels of distribution devices from the incoming power line at the construction site to the electrical equipment.



Tertiary distribution boxes, or switch boxes, are designated for individual equipment. What are the specific meanings and functions of primary, secondary, and tertiary distribution boxes? The ...



The principle of minimizing distribution distances means that the distances between distribution boards and switch boxes should be kept as short as possible. The main distribution board should be located ...

Contact Us

For more information, pricing, or custom energy solutions, please contact us:

Website: <https://www.gdroofing.co.za>

Email: sales@gdroofing.co.za

Phone: +27 72 418 9365

Address: 22 Electron Avenue, Isando, Johannesburg, 1600, South Africa

This document is for informational purposes only. Specifications subject to change without notice.

