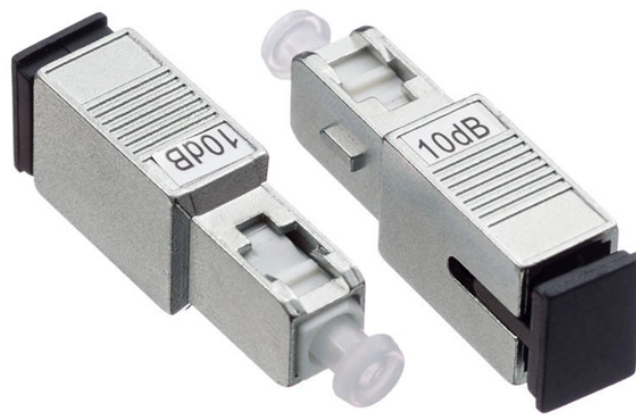


Distribution box temperature 40



Distribution box temperature 40



If the internal enclosure temperature is greater than the outdoor (ambient) temperature, wind will provide greater heat transfer and thus cool the enclosure. But, because the presence of wind cannot be ...



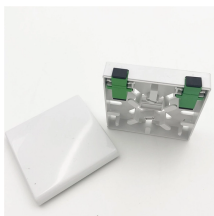
Terminal boxes with a capacity of 2 and 4 modules. Surface boxes with a capacity of 4, 8, 12, 24 and 36 modules with transparent window. Supplied in individual packaging. When several items are sent ...




Temperature control is critical in protecting electrical equipment, but what factors contribute to heat and humidity and should be accounted for in specifications?





Excessive Temperature Reducing the Service Life of Electrical Equipment inside the Distribution Box. The maximum ambient temperature around electrical equipment designed and manufactured ...





The Vertiv™ NetSure™ External Distribution Box securely adds DC power distribution and fiber capacity to macro base stations at 5G cell sites.

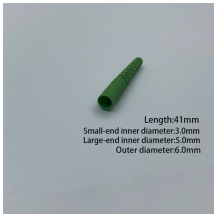
	<p>Protect the life of distribution box in high UV and extreme temperatures with UV-resistant materials, insulation, ventilation, and regular maintenance.</p>
---	--

	<p>If the temperature rise of the power distribution terminal strip equipment can be controlled within a reasonable range, surrounding circuit breakers and relays will not frequently malfunction due ...</p>
---	--

	<p>1. High temperature reduces the service life of electrical equipment in distribution box The upper limit of the ambient temperature of the electrical equipment designed and manufactured according to the ...</p>
--	---

	<p>The optimal Electrical Panel Temperature Range lies between 40°C (105°F) and 50°C (122°F). As the internal temperature of the components increase, their lifespan will decrease.</p>
---	---

	<p>The service conditions of stainless steel distribution box are as follows: The ambient air temperature is - 5 °C ~ + 40 °C, and the average value of 24 hours is not more than + 35 °C;</p>
---	--

	<p>If an enclosure has a higher heat load and/ or if the cabinet needs to maintain an internal temperature below a maximum ambient temperature, an air conditioner is the best closed loop cooling option.</p>
---	--



When they finally performed temperature rise testing, the culprit emerged: a main distribution panel that became a thermal bottleneck as air conditioning loads peaked. The thermal imaging revealed how ...

Contact Us

For more information, pricing, or custom energy solutions, please contact us:

Website: <https://www.gdroofing.co.za>

Email: sales@gdroofing.co.za

Phone: +27 72 418 9365

Address: 22 Electron Avenue, Isando, Johannesburg, 1600, South Africa

This document is for informational purposes only. Specifications subject to change without notice.

