

## Distribution box wiring CNC



## Distribution box wiring CNC



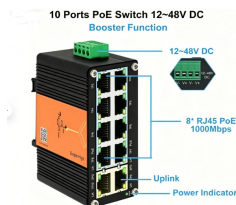
YCX8-BS AC Distribution Box Installation Guide: Wiring and assembly of YCB7LE-63 RCBO, YCB7-63N MCB, terminal blocks.  
#electricalinstallation #electricalwir...



This document provides a wiring diagram for a CNC machine and includes the following warnings:  
1. Poor wiring can increase risks of fire or power surges and an electrician should review the work.



Learn about the wiring schematic of a CNC machine and how it connects various components to control the machine's movements and operations.



There was plenty of internal AC connection wiring to do at this point between the newly added components and the panel. I also routed the main power cable into the box and connected it. ...



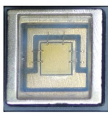
Learn how to read and understand a CNC router wiring diagram to troubleshoot and repair electrical issues in your CNC machine.



Any advice on the wiring for my machine build would be very appreciated. I've attached the power distribution diagram of what I plan to do.... I have four wire 220vac available coming from a ...



Topic DC Micro Style Distribution Boxes Four-pin, One Signal per Port Cable Connector Distribution Four-pin, Two Signals per Port Cable Connector Distribution Four-pin, One Signal per Port Cable ...



How to Upgrade Your CNC Control Box: Step-by-Step DIY Wiring Tutorial: In this project, I am upgrading the CNC control Box with the new feature. As I use both Laser and Spindle so it makes ...



There are few general rules that should be followed when designing and wiring the electrical cabinet and all the electronics within. By following the rules and guides the CNC wiring will ...



Learn how to read and understand a CNC control panel wiring diagram. Decode symbols, trace power lines, and troubleshoot Fanuc, Siemens & Mitsubishi systems effectively.



## Contact Us

For more information, pricing, or custom energy solutions, please contact us:

Website: <https://www.gdroofing.co.za>

Email: [sales@gdroofing.co.za](mailto:sales@gdroofing.co.za)

Phone: +27 72 418 9365

Address: 22 Electron Avenue, Isando, Johannesburg, 1600, South Africa

This document is for informational purposes only. Specifications subject to change without notice.

