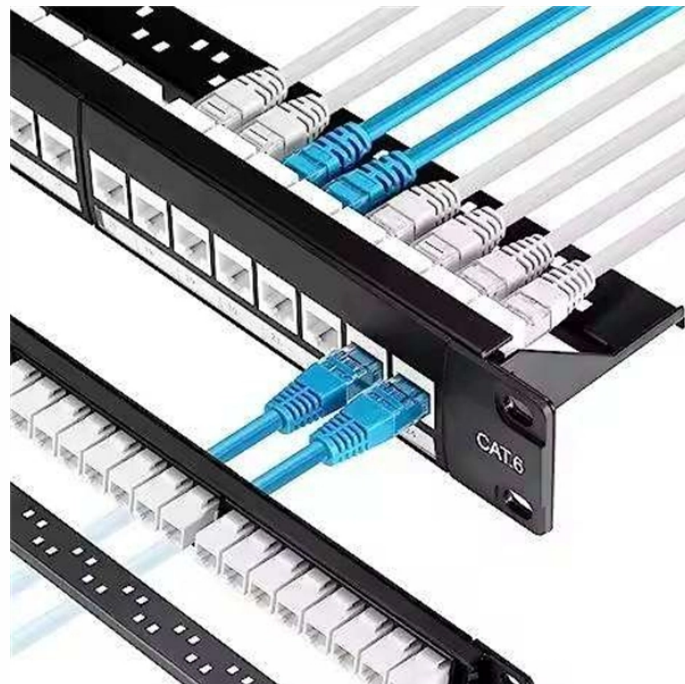


# Does connecting a low-voltage JDG conduit to a cable tray require a junction box



## Overview

Yes, in most cases, a junction box is required when connecting wires. It's not just a safety measure—it's also a code requirement in many regions, including under the National Electrical Code (NEC) in the U. S. 15, a junction box is required whenever: You cannot: Common Misunderstanding If a cable passes through without splicing or terminating, you may not need to install a junction box — but you must still protect the conductors according to the wiring method rules. A junction box must be. Choosing between a conduit body and a junction box depends largely on the purpose of the installation and the electrical code requirements. Here are some practical scenarios to help you decide: You need a directional change in a conduit run, such as a 90-degree turn or a T-branch. The wiring path. According to the NEC (National Electrical Code), all wire splices and electrical connections must be enclosed within an approved electrical junction box to ensure safety, accessibility, and code compliance. 1 (C) provides the designators for raceway trade sizes. In this article, we'll explain.

## Does connecting a low-voltage JGD conduit to a cable tray require a



If you are using basket tray for your cable tray, you connect conduit directly to it using these grounding bushings. Then your pathway can be bonded together and completely grounded.



If a cable passes through without splicing or terminating, you may not need to install a junction box — but you must still protect the conductors ...



You must connect all ground wires together inside the junction box. The NEC says you can use a pigtail, which means twisting the ground wires and adding a short wire to the box or device.



All conductors of a circuit, including the neutral and equipment grounding conductors, must be run in the same raceway, cable, trench, cord, or cable tray; except as permitted by 300.3 (B) (1) through (4).



If a cable passes through without splicing or terminating, you may not need to install a junction box — but you must still protect the conductors according to the wiring method rules.



Low voltage cable does not always require conduit. But there are situations where skipping it costs you more than the labor to install it. Above accessible ceilings in commercial ...



Choose a junction box when you need to safely splice or branch conductors, mount electrical devices, or handle multiple conduit entries with ease. Both must be accessible, code ...



According to the NEC (National Electrical Code), all wire splices and electrical connections must be enclosed within an approved electrical junction box to ensure safety, ...



Today, we'll clarify when a junction box for low-voltage wiring is a legal or functional requirement, and when you can safely choose simple solutions like low-voltage mounting brackets.



Yes, in most cases, a junction box is required when connecting wires. It's not just a safety measure—it's also a code requirement in many regions, including under the National Electrical Code ...



While PLTC-type cable is intended for use in cable trays, many PLTC-type cables are listed for use outdoors exposed (direct sunlight), direct burial (without conduit), and hazardous locations (presence ...

## Contact Us

For more information, pricing, or custom energy solutions, please contact us:

Website: <https://www.gdroofing.co.za>

Email: [sales@gdroofing.co.za](mailto:sales@gdroofing.co.za)

Phone: +27 72 418 9365

Address: 22 Electron Avenue, Isando, Johannesburg, 1600, South Africa

This document is for informational purposes only. Specifications subject to change without notice.

