

Does introducing AI require a server

Motor protection controller

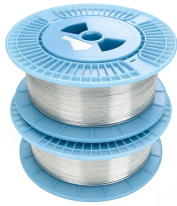


Overview

Running AI locally means that instead of accessing an AI model over the internet, your computer processes everything directly. In other words, a device you own is responsible for all the computing needed to make the AI work. After spending three months testing every major local AI platform, benchmarking 15+ hardware configurations, and documenting setup processes that actually work, I've built a system that runs GPT-4 class models at 25+ tokens/second with zero recurring costs and complete data privacy. The most important thing is to create the right technological conditions. The technological landscape is characterised by a high degree of. Today, we're announcing the general availability of OpenClaw on Amazon Lightsail to launch OpenClaw instance, pairing your browser, enabling AI capabilities, and optionally connecting messaging channels. For example, when using a local chatbot, your computer generates replies. Today, we're proud to introduce Maia 200, a breakthrough inference accelerator engineered to dramatically improve the economics of AI token generation. Maia 200 is an AI inference powerhouse: an accelerator built on TSMC's 3nm process with native FP8/FP4 tensor cores, a redesigned memory system. An AI data center, also known as

an artificial intelligence data center, is a facility purpose-built to train and deploy advanced machine learning and LLM (large language model) workloads. Unlike traditional enterprise or cloud data centers, which focus on storage or web applications, AI data.

Does introducing AI require a server



Running AI locally is an attractive option for those who prioritize privacy, security and performance. However, it requires powerful hardware and a willingness to handle technical ...



Most AI models and frameworks already have Python APIs and can be used quickly. If you don't want to provide and maintain servers yourself, existing infrastructures are helpful.



Serverless inference is an approach to using machine learning models that eliminates the need to provision or manage any underlying infrastructure while still enabling applications to access ...



Serverless inference is an approach to using machine learning models that eliminates the need to provision or manage any underlying infrastructure ...



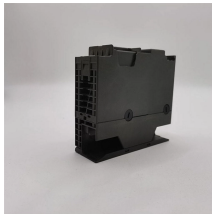
Learn what an AI data center is, how much power and water it uses and how to build and optimize data centers for LLM workloads efficiently.



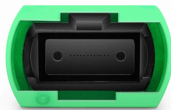
The era of large-scale AI is just beginning, and infrastructure will define what's possible. Our Maia AI accelerator program is designed to be multi-generational.



Learn about Vertex AI, a comprehensive machine learning (ML) platform that lets you train, deploy, and manage ML models and AI applications, including Google's generative AI models.



Once you complete setup, you can start chatting with your AI assistant immediately — no additional configuration required. OpenClaw is an open-source self-hosted autonomous private AI ...



Explore key considerations for AI servers and how to design them to support AI workloads optimally.



Empower users with intelligent tools: We identify areas where AI can be used responsibly to create tools for addressing specific user needs. We respect how our users choose to use these ...



Here's everything you need to run AI models locally in 2025. TL;DR: Local AI deployment saves \$300–500/month in API costs after a \$1,200–2,500 ...

Contact Us

For more information, pricing, or custom energy solutions, please contact us:

Website: <https://www.gdroofing.co.za>

Email: sales@gdroofing.co.za

Phone: +27 72 418 9365

Address: 22 Electron Avenue, Isando, Johannesburg, 1600, South Africa

This document is for informational purposes only. Specifications subject to change without notice.

