

Does the H3C optical module need to be enabled



Overview

Fiber Optic Mode : If long-distance transmission or high-reliability connection is required, it is recommended to enable fiber optic mode by default. H3C devices support optical module models of different specifications. Being an industry group uniting representatives of the data and optical worlds, OIF's purpose is to accelerate the deployment of interoperable, cost-effective and robust optical internetworks and their associated technologies. Optical internetworks are data networks composed of routers and data. This step-by-step implementation guide helps network and field reliability teams pick the right optics across 100G, 200G, 250G, 300G, and 400G, validate it with DOM telemetry, and troubleshoot the failure modes that show up in real racks. It enables reliable 1Gbps optical connections between switches, servers, and other networking devices, making it suitable for switch-to-switch interconnects, access layer. The combo enable copper and combo enable fiber commands can be used to flexibly switch the working mode of an interface to meet networking requirements in different scenarios. This article will deeply analyze the functions, configuration logic, and typical application scenarios of these two. Optical modules are commonly used in switches, network cards,

routers and other communications equipment, in the process of using the optical module information can be read to understand its real-time operating status, when there is a link abnormality can be more quickly locate the cause of the.

Does the H3C optical module need to be enabled



The H3C SFP GE SX MM850 A is a common Gigabit Ethernet SFP module designed for multimode fiber links operating at 850nm. It enables reliable 1Gbps optical connections between switches, servers, ...



Optical modules transmit signals over optical fibers. Optical transmission features low loss and is fit for long distance transmission. H3C devices support optical module models of different specifications. ...



It works by adding redundant bits to a bitstream to help the decoder detect and correct some transmission errors without the need for retransmission. This function needs to be turned on by the ...



The device does not automatically save the configuration when you log out of the Web interface. To prevent the loss of configuration when the device reboots, you must save the configuration.



In H3C network devices, a combo port (optical-copper multiplexing port) is a multifunctional interface that integrates two physical media: optical fiber and copper cable. The combo enable copper and combo ...



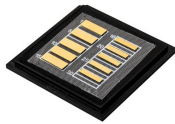
Optical modules are widely used in switches, network cards, routers, and other communication equipment. Reading optical module information during use helps understand its real ...



Learn how to select and validate a data center transceiver from 100G to 400G, including optics specs, switch compatibility, DOM checks, and reliability pitfalls.



ABSTRACT: This Implementation Agreement specifies key aspects and electro-optical-mechanical details of a 3.2Tb/s Co-Packaged Module encompassing optical and copper cable attach ...



Insert PoE optical transceiver modules only into the photoelectric hybrid ports (PSFP or PSFP+ ports). To connect the photoelectric hybrid ports, use hybrid copper-fiber cables with fiber PoE patch cords.



To enable the H3C S7500/S7500E/S9500 switch to collaborate with the module, you need to configure the ports on the switch. Page 60: Configuring The Access Controller Module

Contact Us

For more information, pricing, or custom energy solutions, please contact us:

Website: <https://www.gdroofing.co.za>

Email: sales@gdroofing.co.za

Phone: +27 72 418 9365

Address: 22 Electron Avenue, Isando, Johannesburg, 1600, South Africa

This document is for informational purposes only. Specifications subject to change without notice.

