

Does the Xiaomi router connect directly to the fiber optic cable



From standard **1U** to **8U** sizes to

fully customized **Non-standard** enclosures.

Overview

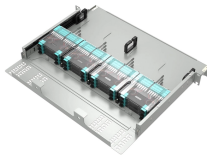
The fiber optic cable does not plug directly into a standard home router because the signal type must be translated. The fiber line terminates at the Optical Network Terminal (ONT), which is typically supplied and installed by the internet service provider. Does it help?

Copyright © 2010 - 2026 Xiaomi. All Rights Reserved To connect the network cable to the device, please refer to the. The Xiaomi Router Be5000 is compatible with fiber optic internet, offering 2.5Gbps support, stable performance under high load, and seamless integration with the Xiaomi Mi Home ecosystem for smart home management. Note: If you use the Ethernet wall socket instead of the modem, directly plug the network cable into it. Scan QR code to download Xiaomi Home app*.

Does the Xiaomi router connect directly to the fiber optic cable



Most fiber ISPs, including Mercury, provide an ONT that connects directly to your router via an Ethernet cable. This means you don't need a specialized modem-router device, but your ...



I'm not particularly sure you can wire fiber directly to a router other than PLDT's. Keeping PLDT's router as your bridge to the internet would also help in keeping your connection accessible to ...



Fiber internet does not use a traditional cable modem. Instead, it requires an Optical Network Terminal (ONT) — a device supplied by your fiber provider that converts the light-based ...



Your router or modem does not directly connect to the fiber optic cable, but rather, it connects to an Optical Network Terminal (ONT) that converts the fiber optic signals into Ethernet.



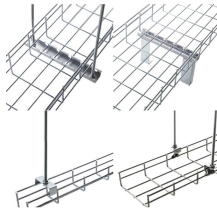
However, setting up a fiber optic connection to your router can seem daunting if you're unfamiliar with the process. In this guide, we'll walk you through how to connect a fiber optic...



By following this detailed guide, you've not only learned how to connect fiber optic cable to router properly but also how to optimize and maintain that connection for peak performance.



The fiber optic cable does not plug directly into a standard home router because the signal type must be translated. The fiber line terminates at the Optical Network Terminal (ONT), ...



Plug one end of the network cable into either of the router's ports and the other end into the Internet wall socket or the LAN port of an optical modem or ADSL modem.



Fiber internet does not use a traditional cable modem. Instead, it requires an Optical Network Terminal (ONT) — a device supplied by your fiber ...



The Xiaomi Router Be5000 is compatible with fiber optic internet, offering 2.5Gbps support, stable performance under high load, and seamless integration with the Xiaomi Mi Home ecosystem for ...



Plug one end of the network cable into either of the router's port, and the other ...



Plug one end of the network cable into either of the router's port, and the other end into the LAN port of the modem. Note: If you use the Ethernet wall socket instead of the modem, directly plug the network ...

Contact Us

For more information, pricing, or custom energy solutions, please contact us:

Website: <https://www.gdroofing.co.za>

Email: sales@gdroofing.co.za

Phone: +27 72 418 9365

Address: 22 Electron Avenue, Isando, Johannesburg, 1600, South Africa

This document is for informational purposes only. Specifications subject to change without notice.

