

Does the primary distribution box require power



Overview

Typically acts as the main distribution point for the entire site or project. Generally does not supply power directly to end-use equipment. Without it, managing power would be messy, unsafe, and inefficient. In this guide, we'll explain what a power. Primary distribution systems consist of feeders that deliver power from distribution substations to distribution transformers. Many feeders leave substation in a concrete ducts and are routed to a nearby pole.



Does the primary distribution box require power



Distribution boxes vary in size and shape based on the complexity of the electrical system and the building's power needs. They can be installed in different places such as electrical ...



A power distribution box is a key part of any electrical system. It takes electricity from the main source and safely sends it to different circuits in a home, office, or industrial setup. Without it, ...



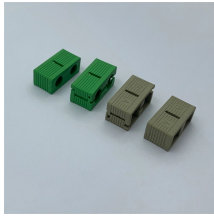
Generally does not supply power directly to end-use equipment. Equipment inside usually includes isolating switches, circuit breakers, and residual current devices (RCDs).



In this system, the primary distribution network supplies a few substations per area, and the 230/400 V power from each substation is directly distributed to end users over a region of normally less than 1 ...



A power distribution box acts like a traffic controller for electricity. It receives power from the main supply and routes it to different devices or areas through separate circuits.



Inside, it houses circuit breakers, busbars, and terminals that collectively control and protect electrical flow. These boxes are vital within broader power distribution systems, linking ...



Primary distribution systems consist of feeders that deliver power from distribution substations to distribution transformers. A feeder usually begins with a feeder breaker at the ...



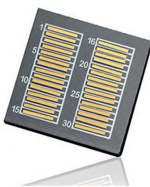
Generally does not supply power directly to end-use equipment. Equipment inside usually includes isolating switches, circuit breakers, and residual current devices (RCDs).



The primary function of a distribution box is to efficiently distribute electrical power throughout a building or facility. It acts as a central hub that takes power from the main supply and ...



What is considered to be the voltage level for a primary distribution substation varies country by country and depends on the whole electricity network structure and extent and historical and organizational ...



Home distribution boxes typically handle single-phase power supplies and contain 6 to 24 circuits. They include standard circuit breakers for lighting, outlets, and major appliances like water ...

Contact Us

For more information, pricing, or custom energy solutions, please contact us:

Website: <https://www.gdroofing.co.za>

Email: sales@gdroofing.co.za

Phone: +27 72 418 9365

Address: 22 Electron Avenue, Isando, Johannesburg, 1600, South Africa

This document is for informational purposes only. Specifications subject to change without notice.

