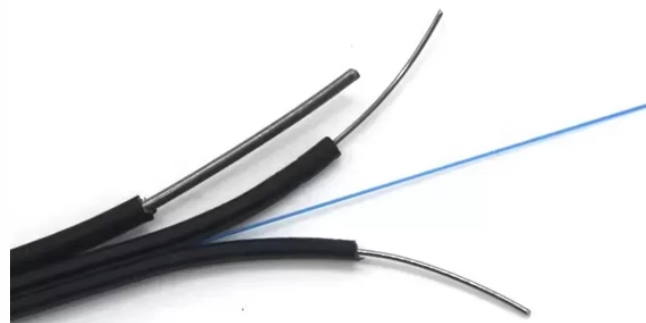


## Does the wiring in the distribution box have a positive and negative direction



### Overview

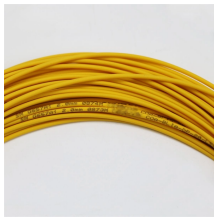
According to master electrician James Hornof, for DC power, the red wire is generally positive and the black wire is usually negative. And all the switching and protective devices are installed in the distribution box. Single Phase Distribution Box generally consists of Double Pole MCBs, Single Pole MCBs, and RCCBs. In the USA and Canada (following NEC and CEC), distribution transformers typically receive 4.2 kV on the primary side and step it down to 120V single-phase and 120/240V split-phase for residential applications. The primary side of the distribution transformer is supplied by two conductors. Connection method: Each switch takes a wire from the incoming point and connects it to the incoming end of the switch, or uses parallel connection to reduce the difficulty of wiring. Wiring Direction: Wiring between the main circuit breaker and each branch circuit breaker in the box generally. When you're dealing with electrical wiring, it's important to know which is positive and which is negative—but how are you supposed to tell them apart?

The easiest way to tell is by looking at the color, but the colors mean different things depending on what kind of power is being used. Don't. Distribution Board or DB is an electricity supply system or a common enclosure that distributes the electrical power feed into subcircuits. It includes isolator, RCCB (Residual current circuit breaker) or RCD (Residual-current device) devices, protective fuses or MCB's (Miniature Circuit Breaker). Messy distribution boxes are dangerous and very hard to fix. This guide shows you how to organize circuit breaker wiring properly.

## Does the wiring in the distribution box have a positive and negative



In a panel box like this the breakers are installed in two side-by-side rows so that a metal clamp on each breaker makes contact with one of two hot bus bars running down the middle of the box.



This article will guide you through the essential steps needed for wiring a single-phase DB (Distribution Board) box. By following these instructions carefully, you can ensure proper ...



Master the safest and most efficient circuit breaker wiring configurations. Learn about single-phase vs. three-phase setups, safety standards, and future-proof electrical ...



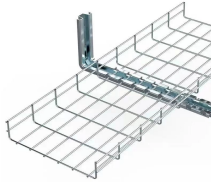
The correct wiring is crucial—connect positive terminals to positive and negative to negative, using appropriate cables to prevent electrical hazards. ...



The correct wiring is crucial—connect positive terminals to positive and negative to negative, using appropriate cables to prevent electrical hazards. Installing a bypass switch is ...



These three wires enter the meter box and then connect to the main panel. In the following tutorial, we will show how to wire 120V single-phase and 240V split-phase circuit breakers and loads inside a ...



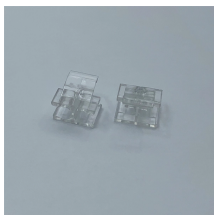
Master the safest and most efficient circuit breaker wiring configurations. Learn about single-phase vs. three-phase setups, safety standards, and future-proof electrical planning.



Hey, in this article we are going to see the Single Phase Distribution Box Wiring Diagram and Connection Procedure. A distribution board or distribution box is where the main power supply is ...



Wiring Direction: Wiring between the main circuit breaker and each branch circuit breaker in the box generally goes on the left, and the wiring out of the distribution box generally goes on the ...



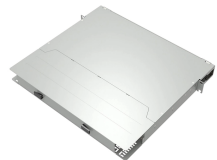
Don't worry, it's not as confusing as it sounds! With help from professional electricians Ricardo Mitchell and James Hornof, we're going to explain everything you need to know so you can ...



In physics and chemistry, electric polarity defines the electric charge separation into positive and negative charges within a system or molecule (for example, water molecules have unequal ...



The cable or wire size, the rating of breakers, fuse, etc depends on the type of wiring, purpose, and rating of loads. It should be properly selected as per the recommended standards and ...



Wiring Direction: Wiring between the main circuit breaker and each branch circuit breaker in the box generally goes on the left, and the wiring out of ...

## Contact Us

For more information, pricing, or custom energy solutions, please contact us:

Website: <https://www.gdroofing.co.za>

Email: [sales@gdroofing.co.za](mailto:sales@gdroofing.co.za)

Phone: +27 72 418 9365

Address: 22 Electron Avenue, Isando, Johannesburg, 1600, South Africa

This document is for informational purposes only. Specifications subject to change without notice.

