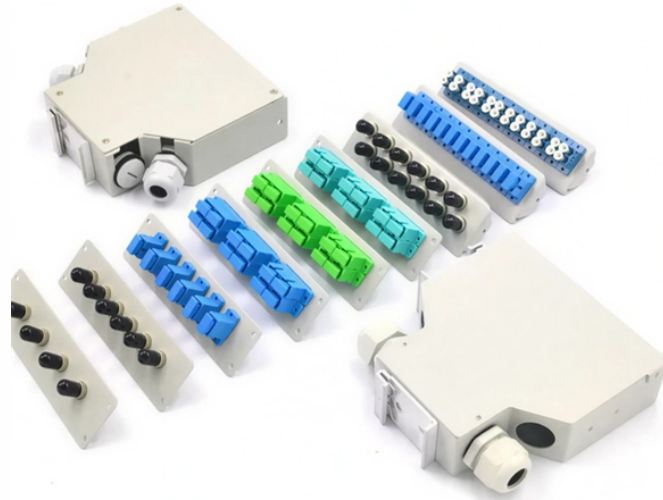


Does the workshop need an industrial switch



Does the workshop need an industrial switch



By meeting these standards, an industrial Ethernet switch can deliver stable, secure, and long-term performance in challenging industrial conditions.



The core value of industrial switches lies in their three key technical characteristics—environmental adaptability, reliability, and scalability—which directly determine their ...



Learn about L2 and L3 Industrial Grade Network Switches, PoE vs non-PoE types, and how to choose the right rugged switch for your industrial setup.



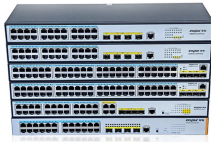
How do they compare to other kinds of switches, and do you really need one? You'll find those answers and more in this quick guide comparing industrial switches to commercial switches.



Industrial switches are primarily used in factories, manufacturing units, and other industrial settings where reliability, durability, and performance are essential.



Discover the critical differences between industrial and normal switches — including ports, power, protocols, temperature tolerance, and mounting. Find out which is right for your environment.



In industrial environments where downtime can lead to production halts or safety issues, industrial switches are the preferred choice to ensure continuous operation and long-term cost savings.



By choosing industrial switches certified by relevant regulatory bodies, you can reduce the risk of non-compliance and demonstrate your commitment to quality and safety. Industrial Switches are ...



Avoid dangers on the factory floor by knowing what to look for in adopting industrial switches at your workplace. Check out our eBook to learn everything from “What Is a Switch” to making the right ...



What Is an Industrial Network Switch? An industrial Ethernet network relies on a vital component called the industrial network switch. This switch, often known simply as a network...

Contact Us

For more information, pricing, or custom energy solutions, please contact us:

Website: <https://www.gdroofing.co.za>

Email: sales@gdroofing.co.za

Phone: +27 72 418 9365

Address: 22 Electron Avenue, Isando, Johannesburg, 1600, South Africa

This document is for informational purposes only. Specifications subject to change without notice.

