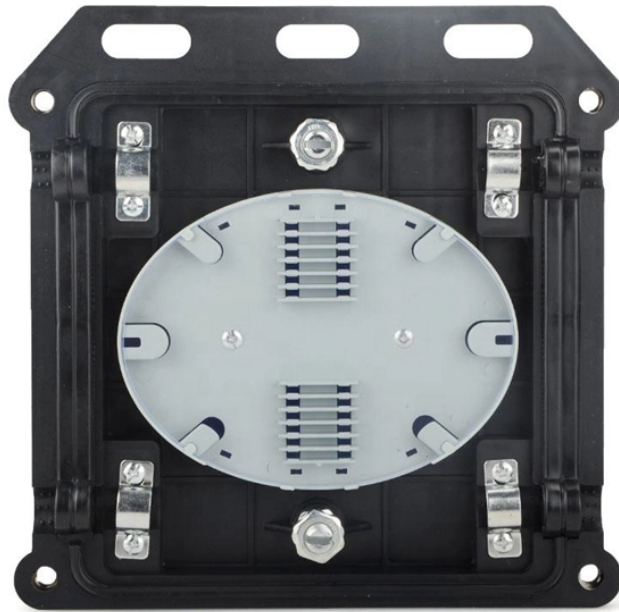


## Dongya Aluminum-Zinc Cable Tray Standard Number



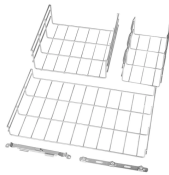
### Overview

ASTM A653/A653M - Standard Specification for Steel Sheet, Zinc-Coated (Galvanized) or Zinc-Iron Alloy-Coated (Galvannealed) by the Hot-Dip Process. NEMA VE 1-2009 - Metal Cable Tray Systems. This document contains proprietary information developed by and for exclusive use of Saudi Electricity Company (SEC) Distribution Network. Your acceptance of the document is an acknowledgment that it must be used for the identified purpose/application and during the period indicated. It cannot be. Cable trays are mechanical support systems that provide a rigid structural system for electrical cables, raceways, and insulated conductors used for electric power distribution, control, signal instrumentation, and communication. Jiangsu Zexin Electric Technology Co. The GB/T 34394-2017 standard covers classification, testing, packaging, and installation. It is used to manage cables for light B manufactures its cable tray in a range of materials with a variety of finishes. The selection of material and finish is a function of the environment in wh tant in a wide range. voestalpine Metsec Cable Tray Systems generally conform to BS EN 61537 Cable management – cable tray systems and cable ladder systems.

## Dongya Aluminum-Zinc Cable Tray Standard Number



Install cable trays as indicated: Installation shall be in accordance with equipment manufacturer's instructions, and with recognized industry practices to ensure that cable tray equipment comply with ...



The document provides a technical data sheet for cable trays including ladder and ...



Screwed connections are in general ISO metric threads fully compliant to tests in accordance with 9.3.1 and 9.3.2 of the standard. Metsec cable tray systems are usually assembled using M6 roofing bolts ...



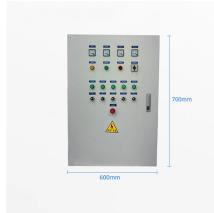
Cable tray shall be fabricated either from corrosion resistant metal such as aluminum alloy or carbon steel with corrosion resistant coating such as zinc coatings as specified in the data schedule.



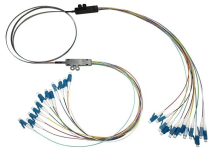
Model Number: Zinc Aluminum Magnesium Large Span Cable Tray Brand Name: Zhongji Bochuang Product Name: Zinc Aluminum Magnesium Large Span Cable Tray Application: Cable wiring, ...



All calculations and data are based on 36" wide cable trays with rungs spaced on 12" centers with tray supported as simple spans with deflection measured at the midpoint.



Cable tray length is selected based on the load to be supported, the distance between the supports (also referred to as the span), and handling and installation constraints.



Get a complete guide to cable tray materials standards in China, the U.S., the EU, India, Australia, the Middle East, and more. Ensure compliance and safety.



Cable trays are mechanical support systems that provide a rigid structural system for electrical cables, raceways, and insulated conductors used for electric power distribution, control, signal ...



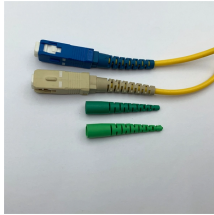
The document provides a technical data sheet for cable trays including ladder and perforated types. It lists specifications for material, thickness, dimensions, loading capacity, fittings and accessories.



Fabricated in numerous styles (wiremesh, ladder, ventilated trough, channel, and solid-bottom) and sizes, cable tray provides the greatest versatility among cable support systems, while offering ...



What factors distinguish different cable tray designs according to the document, and why is it significant for standard testing procedures?  
Different cable tray designs ...



The tray can be cut and bent to the needs of the installer on the jobsite, allowing cable runs to be adjusted as needed. The wide range of sizes offered makes a great choice for everything from a ...

## Contact Us

For more information, pricing, or custom energy solutions, please contact us:

Website: <https://www.gdroofing.co.za>

Email: [sales@gdroofing.co.za](mailto:sales@gdroofing.co.za)

Phone: +27 72 418 9365

Address: 22 Electron Avenue, Isando, Johannesburg, 1600, South Africa

This document is for informational purposes only. Specifications subject to change without notice.

