

## Double busbar segmented wiring design



### Overview

Double Bus Bar Arrangement: This setup uses two bus bars for flexibility, allowing feeders to switch between them, though breaker maintenance can still cause interruptions.



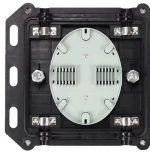
## Double busbar segmented wiring design



As the name says, there are two bus bars, bus 1 and bus 2, as we can see in the diagram, each bay or equipment such as a line, or a transformer is connected to both the buses, through breaker and ...



Three-phase power with currents of up to 5 Amps per phase can be carried, measured and switched by means of the double busbar model. Also present on the board is a branch/ connector which can be ...



At present, the design of substation main wiring mainly is made with reference to the typical design schemes.



Additions of tabs and mounting holes change the cross-sectional area of the conductor, creating potential hot spots on the bus bar. The maximum current for each tab or termination must be ...



Double Bus Bar Arrangement: This setup uses two bus bars for flexibility, allowing feeders to switch between them, though breaker maintenance can still cause interruptions.



Abstract— This paper addresses the optimization of double busbar substations with multiple electrical bays to prevent overcurrents through the coupler and therefore enhance grid reliability.



Industries might prefer single bus-bar systems over double bus-bar systems due to their simplicity, ease of understanding for operators, space efficiency, and lower overall cost, including installation, ...



This technical article explains six most common bus configurations used for distribution, transmission, or switching substations at voltages up to 345 kV. Presented single line diagrams and ...



This technical article explains six most common bus configurations used for distribution, transmission, or switching substations at voltages up to 345 ...



If this program recommends sizes that do not fit into the ranges below, change either the number of conductors or the section thickness of the busbar and recalculate the minimum cost solution



By providing each circuit with two dedicated circuit breakers—one to each of two main buses—it enables ride-through of a single bus fault, facilitates maintenance without load interruption, ...

## Contact Us

For more information, pricing, or custom energy solutions, please contact us:

Website: <https://www.gdroofing.co.za>

Email: [sales@gdroofing.co.za](mailto:sales@gdroofing.co.za)

Phone: +27 72 418 9365

Address: 22 Electron Avenue, Isando, Johannesburg, 1600, South Africa

This document is for informational purposes only. Specifications subject to change without notice.

