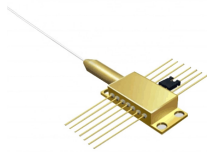


## Doumen Ladder-type Bridge Structure



## Doumen Ladder-type Bridge Structure



There are numerous types of bridges, each designed to meet specific engineering challenges. In this article, we will explore the 7 main types of bridges, focusing on their structure, ...



Understanding why different bridge types exist is far more valuable than memorizing their parts. You're being tested on your ability to recognize how engineers match structural systems to specific ...



Ladder deck bridges can have uniform or variable depth main girders. Wider bridges may use two adjacent ladder deck arrangements with a continuous or separate slab across the four main girders.



From suspension to truss — explore all 20 bridge types with real-world US examples, engineering specs, and photos. Perfect for students & engineers ...



This article describes features common to both types, but it concentrates on the unique bridges because of their greater technical, economic, and aesthetic interest.



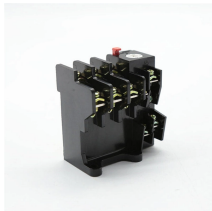
Bridges include both simple and continuous span structures constructed of reinforced concrete, prestressed concrete, steel, timber, or a combination of these materials. Span lengths ...



The DM-4 design specifications have precedence over the AASHTO LRFD Bridge Design Specifications which shall govern where applicable, except as specifically modified by the DM-4.



Individual elements of this structure (usually straight beams) can endure dynamic forces of tension and compression, but by distributing those loads across entire structure, entire bridge can ...



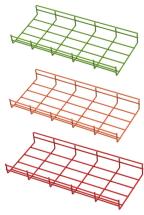
Each type of bridge offers its own set of advantages and disadvantages. Understanding these factors is crucial when deciding which bridge type is most ...



From suspension to truss — explore all 20 bridge types with real-world US examples, engineering specs, and photos. Perfect for students & engineers alike.



This article describes features common to both types, but it concentrates on the unique bridges because of their greater technical, economic, and aesthetic interest.



Individual elements or components of this structure (typically straight beams) can get through dynamic forces of tension and compression, ...



In a standard girder bridge type, the girder and the piers are separate structures. However, a rigid frame bridge is one in which the piers and girder are one solid structure.



This type of structure tends to be used for distances greater than those achieved with a cantilever bridge design but less than a suspension bridge. One of the main issues with this type of bridge is that the ...

## Contact Us

For more information, pricing, or custom energy solutions, please contact us:

Website: <https://www.gdroofing.co.za>

Email: [sales@gdroofing.co.za](mailto:sales@gdroofing.co.za)

Phone: +27 72 418 9365

Address: 22 Electron Avenue, Isando, Johannesburg, 1600, South Africa

This document is for informational purposes only. Specifications subject to change without notice.

