

# Downlink of 200m fiber optic router



## Overview

Extend your internet range wirelessly to cover every corner of your home or office

Steps Covered in the Video:

- 1 Reset your D-Link router
- 2 Connect to the D-Link network (2. 4GHz or 5GHz)
- 3 Access the D-Link admin panel via 192. 1
- 4 Change the Gateway. Many TP-Link products can extend the Internet coverage from your home or business to outdoor areas.

This Solutions Guide will introduce the various ways to expand your indoor network to outdoor spaces, including a backyard, a remote barn or guest house, a dock or yacht club, campgrounds, and other. Fiber optic internet delivers blazing-fast speeds and reliable connectivity, making it a top choice for modern homes and businesses. However, setting up a fiber optic connection to your router can seem daunting if you're unfamiliar with the process. In this guide, we'll walk you through how to. To extend WiFi range outside, you must choose the right method based on distance, line-of-sight, and performance requirements. Copper Ethernet is limited to 100 meters (328 feet) before signal degradation occurs. For longer distances, you'll need fiber optic cabling or a properly engineered 5 GHz.

Transform Your D-Link Router into a WiFi Extender! In this step-by-step tutorial, I'll show you how to

configure your D-Link router as a WiFi repeater or extender in 2025. These strategies include connecting the buildings via wireless communication, a wire, or a fiber optic cable.

## Downlink of 200m fiber optic router



This blog post explains how to extend your network over long distances, exceeding the limitations of copper cabling, using fiber optics.



In this step-by-step tutorial, I'll show you how to configure your D-Link router as a WiFi repeater or extender in 2025. Extend your internet range wirelessly to cover every corner of your...



Fiber optic cable supports significantly longer distances with ...



Learn how to extend your home Internet or Wi-Fi to reach a shed, garage, barn, or other outbuildings. Your shed, barn, or garage may not be as far from your house as the buildings in the ...



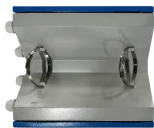
Our selection of routers is based on how much speed we recorded in that spot. The RT-BE96U is our top pick for most categories we cover. It has awesome speeds in our tests, plus it ...



Plug-in the first power line (PLC) adapter to a power outlet near the home router. Now, connect the network port on the PLC adapter to the router with the network cable. Finally, plug the ...



However, setting up a fiber optic connection to your router can seem daunting if you're unfamiliar with the process. In this guide, we'll walk you through how to connect a fiber optic...



Fiber optic cable supports significantly longer distances with minimal latency but requires trenching, permitting, and higher installation costs. If your distance exceeds 328 feet and trenching is ...



Standard indoor routers achieve 30-50 meters indoors and  $\leq 100$  meters outdoors under ideal conditions. True 200m coverage requires purpose-built outdoor APs or bridges—not consumer ...



Long-range point-to-point connections are built with the gigabit fiber converters. They are ideal for connecting the network in multiple buildings, remote surveillance systems, and automated ...



Learn the essential hardware bridge and sequential steps needed to link the optical line to your router.

## Contact Us

For more information, pricing, or custom energy solutions, please contact us:

Website: <https://www.gdroofing.co.za>

Email: [sales@gdroofing.co.za](mailto:sales@gdroofing.co.za)

Phone: +27 72 418 9365

Address: 22 Electron Avenue, Isando, Johannesburg, 1600, South Africa

This document is for informational purposes only. Specifications subject to change without notice.

