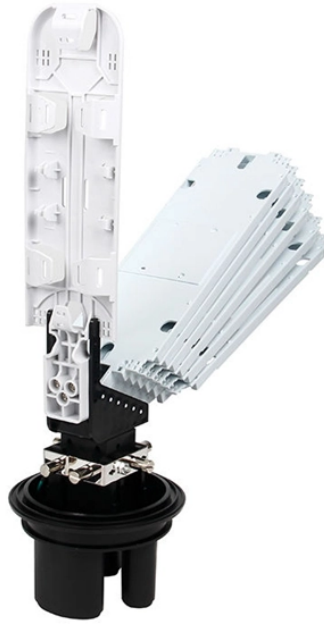


## Dust Prevention During Cable Tray Construction



## Dust Prevention During Cable Tray Construction



Following best practices in cable tray design is essential to ensuring the efficiency, safety, and durability of electrical and network systems. Careful planning, proper selection of materials,...



Cable routing should be **PLANNED AND ORGANIZED** for maximum airflow and minimum employee interference.



A generic guideline developed by the Cable Tray Institute indicates that cable trays should not be filled in excess of 40-50% of the inside area of the tray or of the tray's maximum weight based on the cable ...



Prior to cable pulling, trays and trunking will be ensure to be free from dust, dirt or any construction debris. After the cable pulling, end cap will be provided for cable trays and cable trunks as well as ...



This document provides a risk assessment for cable tray, earthing flat, and support fabrication activities including shifting, loading, unloading, and assembly work.



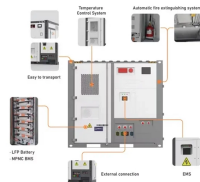
Is your cable tray system optimized for safety, dependability, space and cost savings? Cable tray (or cable ladder) systems are a popular alternative to electrical conduit systems, as they have an ...



To prevent dust and debris from entering the trays, ensure that all open ends are covered with end covers. Ensure that sealing materials are applied correctly at hazardous area ...



Learn how to reduce dust and debris build-up in wire mesh baskets with smart cable tray solutions and practical advice for cable support systems.



Learn how to effectively design cable trays in dust-prone environments to prevent damage and enhance safety. Discover key principles for maintenance and dust prevention measures.



It addresses safety and health hazards as well as production challenges associated with the task. This document can be used for training, hazard analysis, and pre-task planning.

## Contact Us

For more information, pricing, or custom energy solutions, please contact us:

Website: <https://www.gdroofing.co.za>

Email: [sales@gdroofing.co.za](mailto:sales@gdroofing.co.za)

Phone: +27 72 418 9365

Address: 22 Electron Avenue, Isando, Johannesburg, 1600, South Africa

This document is for informational purposes only. Specifications subject to change without notice.

