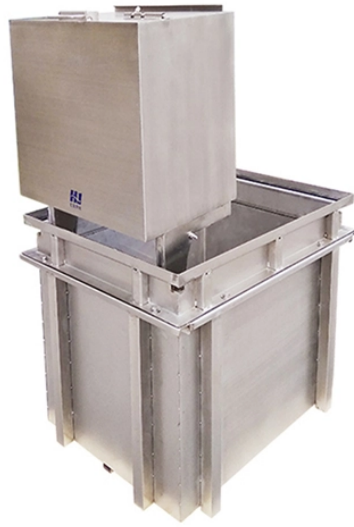


# **Dutch Consulting Fiber Optic Splice Box 24-Core**



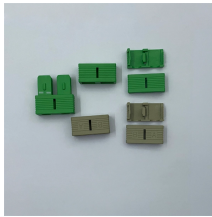
## Dutch Consulting Fiber Optic Splice Box 24-Core



The cable entries (inlets) are loaded with PG16 IP68 rated gland to protect the optical cables and transmission performance. 24 Port Fiber Distribution Box is used for splicing and termination ...



Made from imported PPR reinforced plastics, the box offers high strength, corrosion resistance, a mature structure, reliable sealing, and convenient construction. PPR material is lighter and stronger than PP, ...



Can orderly store fiber connector and remaining fiber, in which the storage disc can be up to four layers large capacity and adjusted according to the number of cores connected by the optical cable.



These boxes are ideal solutions for the secure joining and protection of underground fiber optic cables. Our underground splice boxes stand out for their waterproof and durable features.



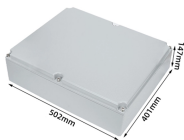
24Core Optical Fiber Splice Box Horizontal type telecom waterproof FOSC 2 inlet 2 out port joint closure 24 Factory wholesale Feature: 1. Suitable for ordinary fiber and ribbon fiber. 2. Fully kitted with all ...



Can orderly store fiber connector and remaining fiber, in which the storage disc ...



This small horizontal fiber splice closure is a compact and durable enclosure designed to protect and manage fiber optic splices in small-scale outdoor deployments, supporting max 24 core splices.



The fiber optic splice cases are made from imported high-intensity engineering plastics (ABS) and formed the shape with mould plastics under high pressure. Light weight, high mechanical intensity, ...



Explore reliable optical fiber splice closures for network deployment. Our closures prioritize reliability, installability, and flexibility.



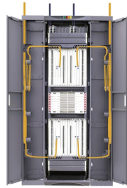
This small horizontal fiber splice closure is a compact and durable enclosure designed to protect and manage fiber optic splices in small-scale outdoor ...



With a maximum capacity of 24 cores, it has the capability to splice up to 48 cores in total. This IP65-rated fiber distribution box is suitable for both indoor and outdoor ...



With a maximum capacity of 24 cores, it has the capability to splice up to 48 cores in total. This IP65-rated fiber distribution box is suitable for both indoor and outdoor applications and can be securely ...



A silicone gasket with cable inlet and exit seals, along with sealing tape and plugs for unused cable entry points, provide a durable and water tight seal for fiber splicing in outdoor environments. Two splice ...

## Contact Us

For more information, pricing, or custom energy solutions, please contact us:

Website: <https://www.gdroofing.co.za>

Email: [sales@gdroofing.co.za](mailto:sales@gdroofing.co.za)

Phone: +27 72 418 9365

Address: 22 Electron Avenue, Isando, Johannesburg, 1600, South Africa

This document is for informational purposes only. Specifications subject to change without notice.

