

DwDm Optical Module Channel Debugging

Product Photography



Overview

This chapter explains how to create Cisco ONS 15454 dense wavelength division multiplexing (DWDM) optical channel client connections (OCHCCs), optical channel client network connections (OCHNCs), and overhead circuits. It also tells you how to upgrade OCHNCs to OCHCCs. Then, you will enjoy this new complete DWDM wavelength channels guide. DWDM Wavelength ITU. DWDM Optical Channel Checker (OCC-4056C) An overview of the DWDM OTDR module's functionality and features. The VIAVI ENCORE Certified Refurbished Equipment Program allows you to buy used, refurbished test equipment with confidence at and get a bargain at the same time. Note Unless otherwise. Setting a wavelength used in optical communication enables fibers to flexibly use different transmission modes in different situations.

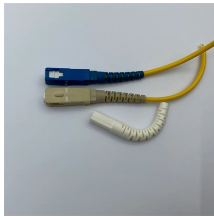
DwDm Optical Module Channel Debugging



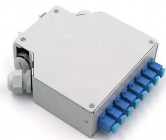
The channel number for the center wavelength of DWDM optical modules is set. By default, the channel number for the center wavelength of DWDM optical modules is not configured.



This section provides information to provision the DWDM coherent optic, frequency, and coherent parameters. Note: Different procedures are required if the DWDM port is managed using the ...



Learn how Wavescan® allows a tech to automatically identify the operational channel of a DWDM MUX/DeMUX port and complete an OTDR test for the link.



The OCC-4056C module, asserts VIAVI, is perfect for successfully maintaining and troubleshooting DWDM wavelengths and routes for telco, CATV, and wireless (4G and 5G mid/fronthaul) applications...



This User Quick Start Guide summarizes the FX92 DWDM C-Band Optical Channel Checker's basic operation and its Test Application.



It can effectively reduce the replacement problem of optical modules caused by changes in network structure, cope with the continuous development of the network, and also reduce the ...



This chapter explains how to create Cisco ONS 15454 dense wavelength division multiplexing (DWDM) optical channel client connections (OCHCCs), optical channel client network connections (OCHNCs), ...



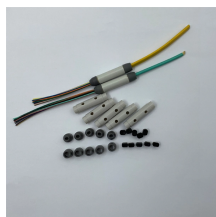
DWDM System Debugging Guide This document discusses debugging a DWDM system by balancing optical powers. It explains that the best receiving power range for receivers needs to be found.



This chapter explains how to create Cisco ONS 15454 dense wavelength division ...



This article will introduce you to what DWDM is, including how DWDM works, What is the DWDM channel spacing, the advantages of the DWDM system, and provide DWDM ITU grid for reference.



Stay up-to-date with the latest developments in DWDM wavelengths and channels. This guide provides a comprehensive overview and helpful resources.

Contact Us

For more information, pricing, or custom energy solutions, please contact us:

Website: <https://www.gdroofing.co.za>

Email: sales@gdroofing.co.za

Phone: +27 72 418 9365

Address: 22 Electron Avenue, Isando, Johannesburg, 1600, South Africa

This document is for informational purposes only. Specifications subject to change without notice.

