

Ecuadorian Data Center Smart PDU Construction Case



Ecuadorian Data Center Smart PDU Construction Case



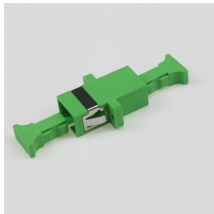
Throughout this handbook, the content will stay focused on rack PDUs—the PDU that sits at the end of the power chain that supplies power directly to IT equipment in a rack.



The evolution of PDUs reflects broader Data Center trends: from low-density setups (0-4 kW per rack) to extreme high-density environments (16+ kW per rack), driven by technologies like blade servers and ...



This article explores how power is connected inside modern data center racks, examining the flow of electricity from facility power feeds to rack ...



2.1 Openness Google is contributing the fifth-generation cooling distribution unit “Project Deschutes” specification to help accelerate adoption of liquid cooling industry wide. This is the first ...



This article explores how power is connected inside modern data center racks, examining the flow of electricity from facility power feeds to rack PDUs and ultimately to IT equipment.



We also build to spec. Designed for seamless integration into data center electrical architecture, our PDUs combine switchgear functionality with intelligent distribution monitoring.



Explore PEDIU-X custom PDU case studies for data centers, mining, construction and renewables—proof of safer power, lower failures and faster deployment.



Managing and installing a rack power distribution unit (PDU) has never been easier than with the EL2P PDU. Designed to simplify deployment and take stress out of power distribution, this intelligent PDU ...



Explore a diverse selection of Intelligent PDUs, including Enlogic PDUs, tailored to suit your unique requirements. From basic monitoring to advanced metering and switching capabilities, Enlogic PDUs ...



From navigating the Andean topography to adhering to Ecuador's stringent construction codes, our team ensures that every phase of your data center build-out is executed flawlessly.



In this context, all the electricity distribution companies of the country have signed an agreement to work in a united and homogeneous way. In order to achieve this, the Integrated System for the...

Contact Us

For more information, pricing, or custom energy solutions, please contact us:

Website: <https://www.gdroofing.co.za>

Email: sales@gdroofing.co.za

Phone: +27 72 418 9365

Address: 22 Electron Avenue, Isando, Johannesburg, 1600, South Africa

This document is for informational purposes only. Specifications subject to change without notice.

