

## Electrical Distribution Box Pre-embedding Techniques

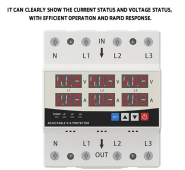


## Electrical Distribution Box Pre-embedding Techniques



When the factory produces precast components, it synchronously embeds the lines, boxes, boxes, and sleeves in the components such as board walls and platforms, and only connects the pipelines of the ...

**LED DISPLAY PANEL**  
CURRENT STATUS CLEARLY VISIBLE



In an embedding process, active or passive components are positioned in the stack up so that they are completely integrated into its construction. Würth Elektronik distinguishes between three ...



Description A construction tool for electricians, for embedding electrical boxes in the masonry (wall) before plastering.



Different from traditional water, heating, and electricity installation. The main work of water and electricity installation of precast components produced in factories is water and electricity ...



Pre-embedded cables are widely used in infrastructure projects such as smart buildings, road lighting systems, large-scale industrial plants, and power distribution networks.



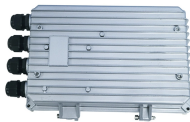
The invention discloses a pre-embedding construction method for a distribution box with rows of pipes, and a support device, and relates to a pre-embedding construction method for distribution pipes and ...



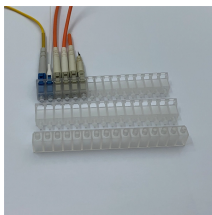
When the box is used, this article shall be supported in the box at the initial installation stage to prevent the box from being damaged by the heavy pressure of the wall brick load and the ...



Browse specifications, literature, drawings, videos and tools that make planning and specifying electrical prefab solutions easy. Access detailed models to streamline ...



The pre - embedding process of electrical wire boxes in walls- Good tools and machinery can quickly improve work efficiency



The invention has the advantages of convenient operation, quick construction, contribution to improving the construction quality, convenience for later-stage electrical installation and the like.



Browse specifications, literature, drawings, videos and tools that make planning and specifying electrical prefab solutions easy. Access detailed models to streamline your design process and ensure ...

## Contact Us

For more information, pricing, or custom energy solutions, please contact us:

Website: <https://www.gdroofing.co.za>

Email: [sales@gdroofing.co.za](mailto:sales@gdroofing.co.za)

Phone: +27 72 418 9365

Address: 22 Electron Avenue, Isando, Johannesburg, 1600, South Africa

This document is for informational purposes only. Specifications subject to change without notice.

