

## Electronic and genuine EMLSD-WAN devices



## Electronic and genuine EMLSD-WAN devices



Build a strong and scalable network that delivers seamless user experiences, optimizes application performance, and offers unparalleled multicloud and SaaS optimization, all through a ...



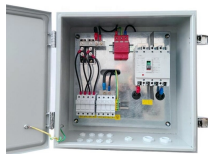
ION devices are available in both hardware and software form factors that meet the needs of any location and any deployment scenario. You can deploy Prisma SD-WAN ION devices in Analytics ...



The return merchandise authentication (RMA) process enables you to replace either failed or malfunctioning SD-WAN devices with new or reused functional SD-WAN devices at a branch or a ...



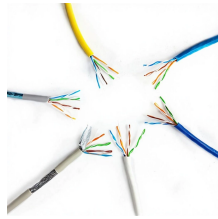
Download Versa's product datasheets: full specs for Secure SD-WAN, SD-LAN, CSG appliances & unified SASE components to compare features and capabilities.



Prisma SD-WAN ION devices initiate multiple connections to the controller for various services such as Message Routing Layer (MRL) service, statistics, flows, logs, and remote access of device toolkit.



After presenting characteristics of the standard 10 Gb/s C-band EML, we propose a 10 Gb/s EML at 1577 nm for next generation access networks, with a record high 10.5 dBm facet ...



To begin the Edge replacement process, customers must contact VMware SD-WAN technical support and provide the Edge serial number(s) and a description of the problem.



Learn about Prisma SD-WAN Device Registration and Claiming process from a Palo Alto Networks SASE specialist in the PANCast podcast episode.



These platforms operate in autonomous routing mode, SD-Routing mode, and SD-WAN controller mode. This document provides information about licensing for all Cisco 8000 Series ...



An SD-WAN appliance is a hardware or virtual device that enables the deployment and management of SD-WAN networks, monitoring multiple connections to dynamically route traffic efficiently and securely.

## Contact Us

For more information, pricing, or custom energy solutions, please contact us:

Website: <https://www.gdroofing.co.za>

Email: [sales@gdroofing.co.za](mailto:sales@gdroofing.co.za)

Phone: +27 72 418 9365

Address: 22 Electron Avenue, Isando, Johannesburg, 1600, South Africa

This document is for informational purposes only. Specifications subject to change without notice.

