

Emergency Operation Procedures for Display Cases



Emergency Operation Procedures for Display Cases



Be sure all your employees understand the function and elements of your emergency action plan, including types of potential emergencies, reporting procedures, alarm systems, evacuation plans, ...



Learn how to create effective retail store emergency procedures to protect staff, customers, and assets during emergencies.



Whether you are a residential care facility for the elderly, a government agency, or any organization looking to establish a solid emergency response plan, our documents can help you create a custom ...



This procedure describes the requirements on emergency preparedness and responses to ensure prompt and safe action in case of any emergency or disaster situation.



Learn how to create effective retail store emergency procedures to protect staff, customers, and assets during emergencies.



Whether you are a residential care facility for the elderly, a government agency, or any organization looking to establish a solid emergency response plan, our ...



The Store Display Emergency Response Protocol is a structured framework designed to address emergencies related to store displays. These emergencies can range from structural collapses, fire ...



Workplaces need emergency plans for major incidents, including evacuation, communication, first aid, and response teams. Training, drills, and coordination with emergency services ensure safety.



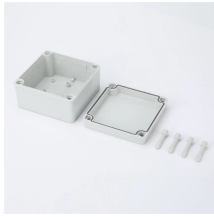
All store employees should become familiar with procedures set forth for handling an emergency or crisis situation. This Handbook should be used as an informational guideline in doing so.



Comprehensive Preparedness Guide (CPG) 101 provides guidance from FEMA on the fundamentals of planning and developing emergency operations plans. The guide describes the steps to produce an ...



The materials are intended to assist employees in understanding what to expect and how to respond during an emergency. All employees should read these procedures and be familiar with them.



Employees are made aware of the “Emergency Situations and Preparedness Plan”. They are informed about the consequences of the accidents and how to react in case of Emergency.

Contact Us

For more information, pricing, or custom energy solutions, please contact us:

Website: <https://www.gdroofing.co.za>

Email: sales@gdroofing.co.za

Phone: +27 72 418 9365

Address: 22 Electron Avenue, Isando, Johannesburg, 1600, South Africa

This document is for informational purposes only. Specifications subject to change without notice.

