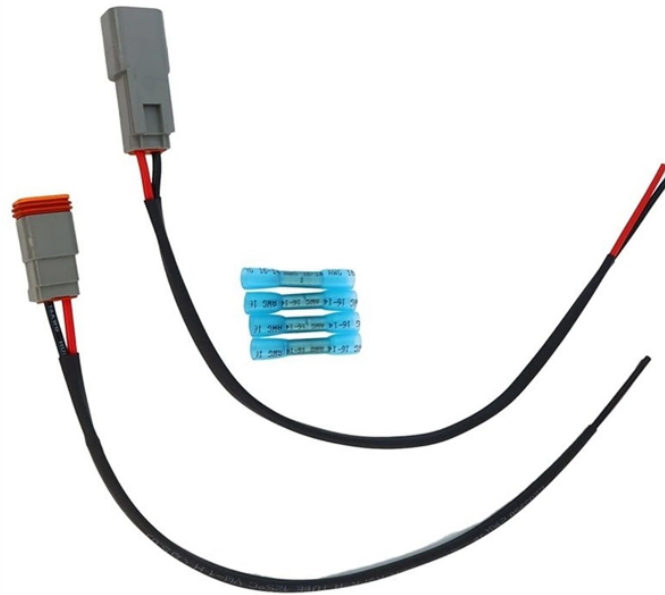


Explosion-proof distribution box installation and processing solution

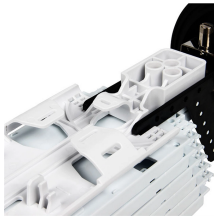


Overview

They're designed to meet two critical challenges: contain internal explosions and prevent external ignition sources from interacting with volatile atmospheres. But beyond compliance paperwork, what makes these solutions truly valuable?

Picture this: You're walking through a petrochemical plant where invisible vapors linger in the air, or maybe a grain processing facility where combustible dust coats every surface. In these environments, a single spark isn't just dangerous - it's catastrophic. Given their ubiquity, let's delve into the installation and wiring of indoor distribution boxes today.

Explosion-proof distribution box installation and processing solutions



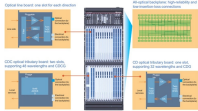
Explosion-proof distribution boxes, vital terminal distribution equipment in power systems, play a crucial role in controlling and protecting industrial electricity in hazardous environments. Given ...



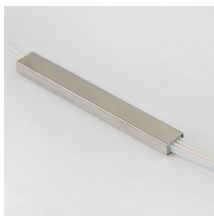
Terminal boxes and junction boxes from Pepperl+Fuchs are designed to protect signal and power distribution networks in explosion-hazardous and challenging environments.



Durable Hexlon Explosion Proof Distribution Boxes and Electrical Enclosures, IECEx and ATEX certified for Zone 1 and Zone 2.



The explosion proof distribution box for chemical plant electrical use is far more than a protective enclosure—it is a comprehensive power management and safety solution tailored for ...



When installing and wiring an explosion-proof distribution box, it is essential to follow strict safety protocols and national electrical standards (e.g., IEC, NEC, or local safety regulations). Below are ...



Atex control stations, explosion protected control units and distribution boxes made stainless steel maritime grade AISI 316L or AISI 304L. Atex Delvalle provides a custom build facility for Hazardous ...



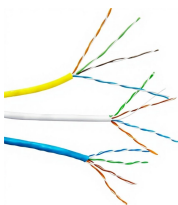
When installing and wiring an explosion-proof distribution box, it is essential to follow strict safety protocols and national electrical standards (e.g., IEC, NEC, or local ...



If installing in a Class I, II Division 2 or Zone 1 for USA or Canada, R. STAHL has the right solution for you. Choose from below or contact us to discuss your specific application.



For industries such as oil refining, petrochemical production, chemical processing, and industrial automation, investing in high-quality explosion proof device enclosures is not only a ...



We supply certified explosion proof distribution box & Atex Transformer -Appleton, ATKON, CZ, CEAG, brands for safe and reliable industrial use.



When you install ATEX-rated equipment, you're not just checking a regulatory box - you're building a culture of safety. The magic of explosion-proof enclosures lies in what you don't see - the physics ...

Contact Us

For more information, pricing, or custom energy solutions, please contact us:

Website: <https://www.gdroofing.co.za>

Email: sales@gdroofing.co.za

Phone: +27 72 418 9365

Address: 22 Electron Avenue, Isando, Johannesburg, 1600, South Africa

This document is for informational purposes only. Specifications subject to change without notice.

