

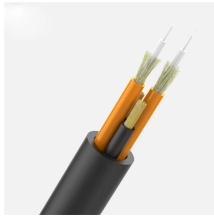
Explosion-proof power distribution box enclosure for smart buildings in West Africa



Explosion-proof power distribution box enclosure for smart building



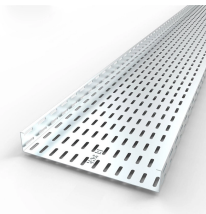
Supermec ATEX Junction Box & Enclosures are designed to satisfy most of our clients' requirements for CONTROL explosion-proof and flameproof enclosures.



Contact our experts or request a quote today.
Main switch:Maximum current is 180A. Branch circuit:Maximum current is 100A.



Find trusted explosion proof power distribution device exporters with ATEX, IECEX, and IP66 certifications. Get custom solutions for hazardous areas. Click to explore verified suppliers and ...



Ex distribution boards - Explosion-proof distribution boards designed for Ex and ATEX areas. Customizable, safe, and certified electrical solutions.



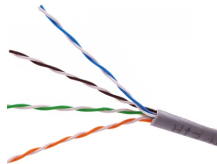
BARTEC offers one of the most extensive ranges of explosion-proof and substance-resistant components, devices, and systems for controlling, switching, and connecting for hazardous areas ...



In this blog post, MINMILE, as high performance explosion-proof equipment exporter, will share design of explosion proof terminal boxes for power distribution in hazardous areas.



Flameproof and explosion proof, these power overhaul distribution boxes are suitable for use in hazardous areas. Main switch: Maximum current is 180A. Branch circuit: Maximum current is 100A. ...



Explore comprehensive explosion-proof enclosures from Ex Industries—built for hazardous areas, spanning from stainless steel housings to UL-certified control panels for total industrial safety.



An explosion-proof distribution box is a rugged enclosure for hazardous areas, safely delivering power while preventing sparks or heat from igniting flammable surroundings.



Discover explosion proof power distribution boxes with IP55/66 ratings, CE certification, and durable electrical enclosures for industrial safety.

Contact Us

For more information, pricing, or custom energy solutions, please contact us:

Website: <https://www.gdroofing.co.za>

Email: sales@gdroofing.co.za

Phone: +27 72 418 9365

Address: 22 Electron Avenue, Isando, Johannesburg, 1600, South Africa

This document is for informational purposes only. Specifications subject to change without notice.

