

External High Beam Linkage Module



External High Beam Linkage Module



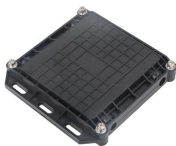
Expanded Beam technology thus guarantees reliable and interference-free transmission even under adverse conditions. As there is no direct contact between the contact ends, Expanded Beam ...



Learn how expanded beam connectors offer reliable, high-density fiber optic solutions, enabling faster and more efficient data center deployments.



Fiber optic connectors are used to couple the source, receiver and other components to the fiber optic cable. There are many types of fiber optic connectors, but each generally uses either physical ...



The CANM8 CANNNECT HIGHBEAM is a CAN Bus Interface that provides a quick solution for detecting High Beam Activity, for the installation of additional driving lights via a relay.



HARTING's Expanded Beam technology is extremely robust and resistant to contaminants. This product is designed to ensure reliable optical connections while operating in the toughest, harshest and ...



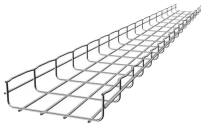
The system also offers advanced beam shaping and real-time power monitoring via an optional integrated FFC (Fiber Feedback Collimator) module for consistent, application-ready performance.



Learn how expanded beam connectors offer reliable, high-density fiber optic solutions, enabling faster and more efficient data center deployments.



Smaller MXC® format accommodates ruggedized strain relief on the external cable only whereas MTP® cables accommodate ruggedized strain relief on internal and external plugs.



The expanded beam of the EBO system, together with a connector design that minimizes dust and the potential for physical damage to the interface, reduces sensitivity to contamination and simplifies ...



Introducing dense and precise fiber optic connectivity based on experience of manufacturing both fiber optic cables and connectors. It will solve challenges requiring more efficiency, convenience, and ...



With modern headlights with LED or xenon technology, it is often difficult or impossible to pick up a control signal for the high beam. In these cases, it is advisable to determine this signal not from the ...

Contact Us

For more information, pricing, or custom energy solutions, please contact us:

Website: <https://www.gdroofing.co.za>

Email: sales@gdroofing.co.za

Phone: +27 72 418 9365

Address: 22 Electron Avenue, Isando, Johannesburg, 1600, South Africa

This document is for informational purposes only. Specifications subject to change without notice.

