

## External Structure Diagram of Explosion-proof Distribution Box



## External Structure Diagram of Explosion-proof Distribution Box



The HRMD92 distribution box (intelligent type) can continuously collect electrical parameters such as voltage, current, power, and energy from each circuit. It features overload, leakage, overvoltage, ...



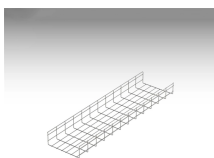
Explosion-proof lighting distribution boxes and cabinets come in a variety of models. They vary in terms of materials, including metal and flame-retardant plastic; installation methods, such as ...



Equipped with specialized hinge structure, which can prevent the flameproof joints from damage when opening and closing the panels, and greatly prolong the service life of box. The boxes can be ...



Explosion proof junction boxes with detachable covers which are secured to the body by high tensile screws. Available in five sizes, these boxes provide a wide range of termination and distribution ...



Grid Cable for marine and offshore applications

BX51 Explosion-Proof Distribution Box delivers safe power control and distribution in explosive-prone environments.



Protect the flame-proof surface when operating. The circuit breaker using metal handle with frozen-resistant and can be equipped with a padlock. The enclosures can be combined and installed to ...



1. Please specify the number and size of cable entries and sides of the enclosure to be fitted. 2. Electrical schematic diagram shall be provided by user. Photo switch, AC contactor, thermal relay or ...



The external dimensions of the distribution cabinet can be determined according to the electrical schematic diagram or technical data provided by the user and the corresponding explosion-proof ...

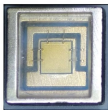


FIG. 1 is a schematic diagram of a three-dimensional structure of an explosion-proof flame-retardant distribution box provided in an embodiment of the present invention.

## Contact Us

For more information, pricing, or custom energy solutions, please contact us:

Website: <https://www.gdroofing.co.za>

Email: [sales@gdroofing.co.za](mailto:sales@gdroofing.co.za)

Phone: +27 72 418 9365

Address: 22 Electron Avenue, Isando, Johannesburg, 1600, South Africa

This document is for informational purposes only. Specifications subject to change without notice.

