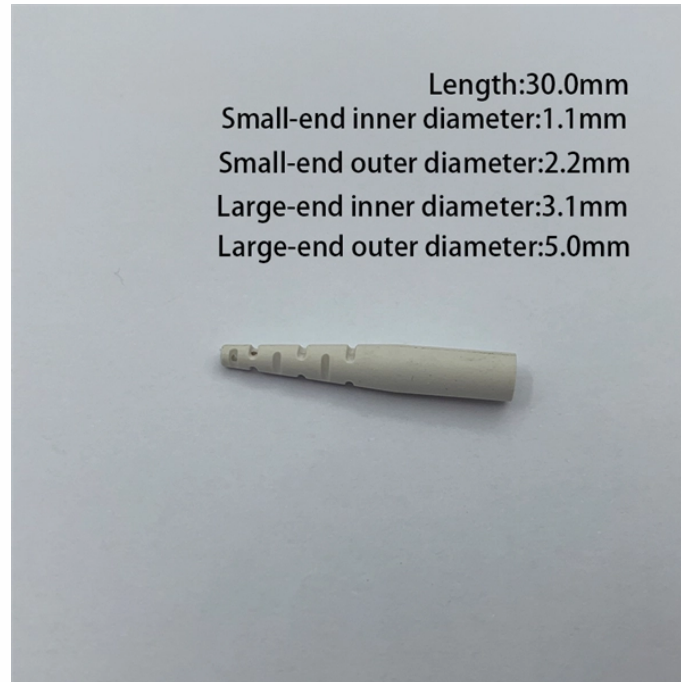


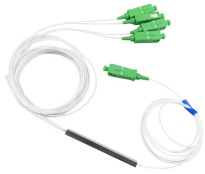
FC Interface Switch



Overview

The goal of Fibre Channel is to create a storage area network (SAN) to connect servers to storage. The SAN is a dedicated network that enables multiple servers to access data from one or more storage devices. Enterprise storage uses the SAN to backup to secondary storage devices including disk arrays, tape libraries, and other backup while the storage is still accessible to the server. Servers ma. Overview Fibre Channel (FC) is a high-speed data transfer protocol providing in-order, lossless delivery of raw block data. Fibre Channel is primarily used to connect to in (SAN) in co. When the technology was originally devised, it ran over optical fiber cables only and, as such, was called "Fiber Channel". Later, the ability to run over copper cabling was added to the specification. In order to avoid confu.

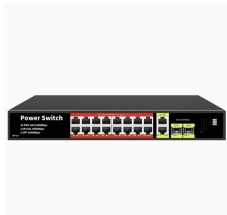
FC Interface Switch



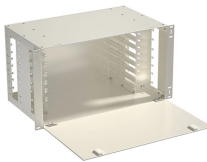
prev up next Changing the port type between a Layer 2 Ethernet interface and an FC interface home Displaying and maintaining FC interfaces



This option is supported only on Fibre Channel (FC) interfaces configured in F-mode. It can be configured regardless of interface speed but will only be applied during link negotiation at 32 ...



The switch connects devices that support FC and Ethernet (such as FCoE servers on an Ethernet network) to an FC SAN, thus converging the Ethernet and FC networks on a single physical network ...



Devices on a storage area network (SAN) use FC interfaces to communicate and carry traffic. To enter the FC interface view, run the interface fc command. You can then perform configurations on the FC ...



What is a Fibre Channel switch (FC switch)? How it works, benefits and comparison to Ethernet switch. A Fibre Channel (FC) switch is a networking device that's compatible with the FC ...



Fibre Channel over Ethernet (FCoE) encapsulation allows a physical Ethernet cable to simultaneously carry Fibre Channel and Ethernet traffic. In Cisco Nexus 5000 Series switches, an FCoE-capable ...



In the computer storage field, a Fibre Channel switch is a network switch compatible with the Fibre Channel (FC) protocol. It allows the creation of a Fibre Channel fabric, that is the core component of ...



A virtual fibre channel (VFC) interface is a logical interface manually created on an FCF switch to simulate the functionality of a physical FC interface. To use a VFC interface, bind it to a physical ...



The Fibre Channel SAN connects servers to storage via Fibre Channel switches. The goal of Fibre Channel is to create a storage area network (SAN) to connect servers to storage.

Contact Us

For more information, pricing, or custom energy solutions, please contact us:

Website: <https://www.gdroofing.co.za>

Email: sales@gdroofing.co.za

Phone: +27 72 418 9365

Address: 22 Electron Avenue, Isando, Johannesburg, 1600, South Africa

This document is for informational purposes only. Specifications subject to change without notice.

