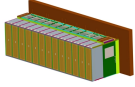


# **FTTH Application-Grade SFP Optical Module Intelligent Selection Guide**



## FTTH Application-Grade SFP Optical Module Intelligent Selection Guide



CXR SFP Modules are industry standard Small Form Pluggable optical modules that serve networking services in the range of low speed to 10-Gigabit application requirements:



over FTTH solutions. Our portfolio of products and engineering support is designed to address your specific challenges from speed of deployment, labor and cost considerations, performance ...



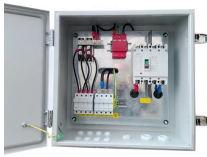
This FTTH module comparison structures the most important module systems according to objective criteria and shows which solution is best suited for which project requirements.



This guide covers the key questions buyers and engineers usually ask: what an SFP transceiver is, how SFP, SFP+, SFP28, and QSFP differ, what common SFP module types are used ...



The module is compliant with SFP Multi-Source Agreement (MSA). This product can be used at 1.0625 Gb/s for Fiber Channel or 1.25 Gb/s for Gigabit Ethernet applications with 30 - 120 km transmission ...



Discover the updated FTTH Handbook, Edition 9 - your complete guide to fibre network planning, design, build, and operation, now with new insights on aerial rollouts.



Powered by intelligent algorithms, FTTH-iOLM automates multipulse OTDR acquisitions on live fibers to dynamically locate and identify all network components and faults with maximal resolution—at the ...



This guide demystifies SFP modules, exploring their design, types, key differences from related modules (like SFP+, SFP28, and QSFP), and actionable tips for selecting the right one for ...



Read the definitive 2026 guide on SFP modules. We explain Single Mode vs Multimode, DDM diagnostics, and how to choose the right transceiver for Cisco, Juniper, and more.



Learn what an SFP transceiver is, how it works, key specifications, types, applications, and how to choose the right SFP module for your network.

## Contact Us

For more information, pricing, or custom energy solutions, please contact us:

Website: <https://www.gdroofing.co.za>

Email: [sales@gdroofing.co.za](mailto:sales@gdroofing.co.za)

Phone: +27 72 418 9365

Address: 22 Electron Avenue, Isando, Johannesburg, 1600, South Africa

This document is for informational purposes only. Specifications subject to change without notice.

