

FTTR Cold Aisle Dimensions for Computer Rooms



Overview

According to the ANSI/TIA/EIA-942-A standard, the recommended width for a cold aisle is 1,2 meters, which typically corresponds to the size of two double floor tiles. Cold air is supplied via perforated tiles at the front of the cabinets, which is distributed to cabinet by fans. Efficient airflow management in data centers relies heavily on proper Hot Aisle and Cold Aisle configurations. We support today's growing mobile and cloud computing markets with our portfolio of power, thermal, infrastructure management products, software and solutions, all complemented by our global service network. Bringing together global reach and local knowledge, and our. 1) Monitor and manage the critical parameters associated with equipment installation, by area of the computer room (no more than two building bays): Space: number of cabinets and rack unit space available vs. utilized Power: PDU output available vs. This configuration is beneficial as it will conserve energy and lower cooling costs by directly managing air flow.

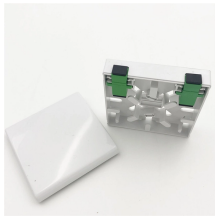
FTTR Cold Aisle Dimensions for Computer Rooms



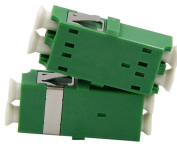
A minimum distance of 2.4 m (8 ft)—or four floor tiles—is recommended in the cold aisles, where the fronts of two rows of cabinets face each other. Perforated floor panels or floor grills must fill the cold ...



Aisle containment in the data center requires that cabinets are aligned in a hot aisle/cold aisle layout. Containment panels or strips create a partition to isolate either the server supply air (cold aisle ...



Are you interested in creating the most energy efficient design for your Data Center Server Room? Consider the Hot Aisle/Cold Aisle layout design.



Aisle space - Provide adequate room at the front and back of cabinets and racks to allow unobstructed servicing of the systems and clear passage for personnel. Keep minimum 48" in the front and 36" on ...



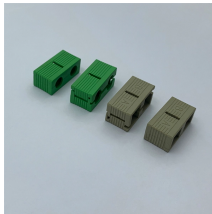
Door Options A choice of door options is available for use with the aisle containment system to provide the right combination of safety and security. Dual sliding doors or Vertical doors can be chosen for ...



Vertiv™ SmartAisle™ - A form of containment proven to lead to substantial savings in energy costs Achieved energy savings through patented, controlled cold aisle containment in many projects ...



Our modular systems provide flexible, secure separation between hot and cold aisles or controlled zones to maintain optimal environmental performance.



1) Monitor and manage the critical parameters associated with equipment installation, by area of the computer room (no more than two building bays): Space: number of cabinets and rack unit space ...



Cold aisle containment systems use doors at aisle ends, ceiling panels or lids above racks, and structural frames to create enclosed zones where cold supply air flows ...



To assist in planning for a hot and cold aisle cooling containment system, 3-D graphic files and 3-D computational fluid dynamics models for use with computer aided design software have been made ...



Proper aisle planning isn't just about airflow—it's about optimizing safety, serviceability, and system efficiency. By adhering to these length and width standards, data center designers can enhance ...



According to the ANSI/TIA/EIA-942-A standard, the recommended width for a cold aisle is 1,2 meters, which typically corresponds to the size of two double floor tiles. Cold air is supplied via perforated ...

Contact Us

For more information, pricing, or custom energy solutions, please contact us:

Website: <https://www.gdroofing.co.za>

Email: sales@gdroofing.co.za

Phone: +27 72 418 9365

Address: 22 Electron Avenue, Isando, Johannesburg, 1600, South Africa

This document is for informational purposes only. Specifications subject to change without notice.

